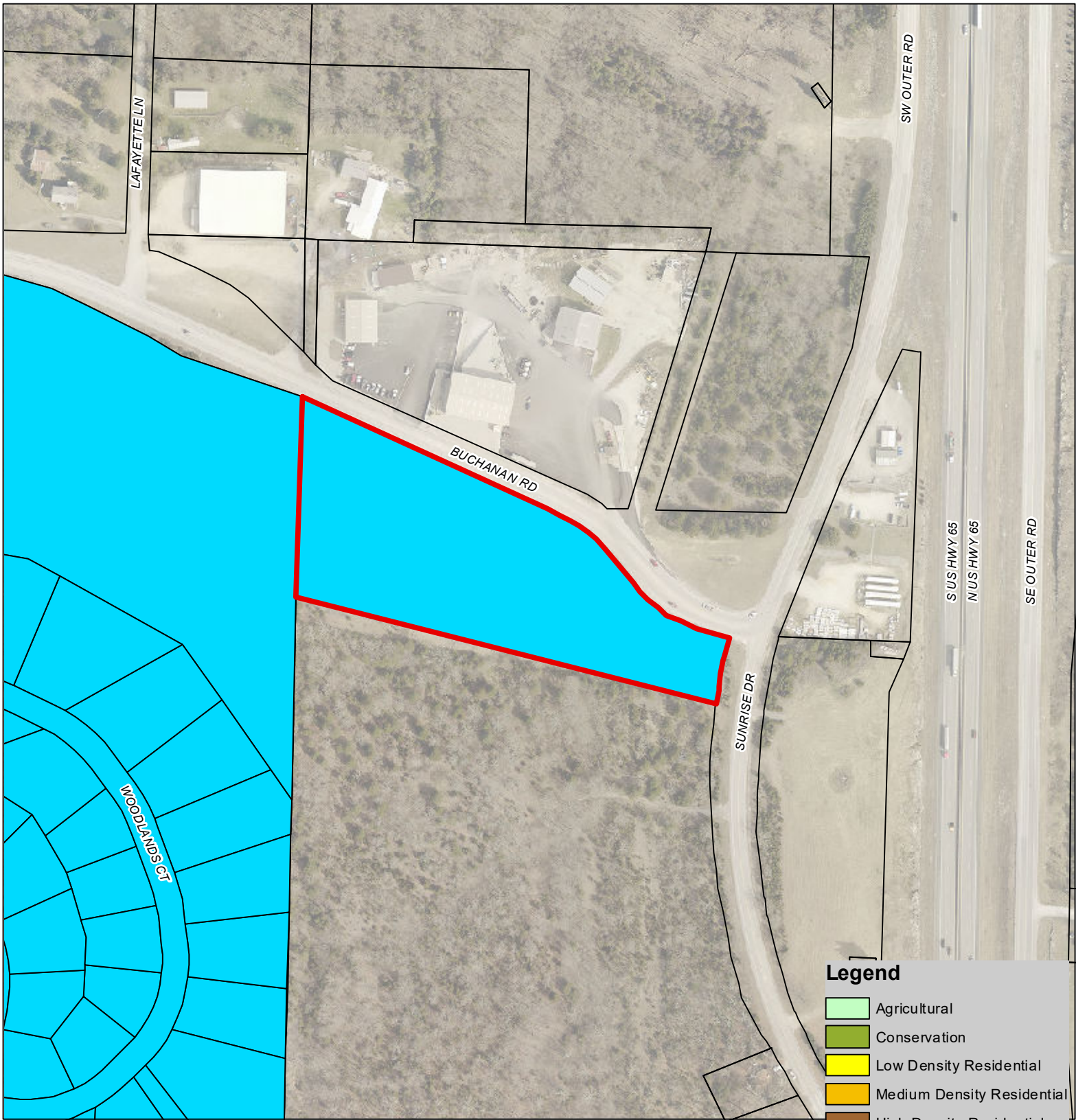


1 inch = 250 feet

City of Branson
Planning & Development
Date: 7/17/2023

297 Buchanan Rd (Current Zoning)

- Legend**
- SUBJECT_R-O-W_VACATION
 - Agricultural
 - Conservation
 - Low Density Residential
 - Medium Density Residential
 - High Density Residential
 - Neighborhood Commercial
 - Mixed-Use
 - Community Commercial
 - Downtown
 - Entertainment
 - Business
 - Industrial
 - Planned Development
 - Unzoned



N

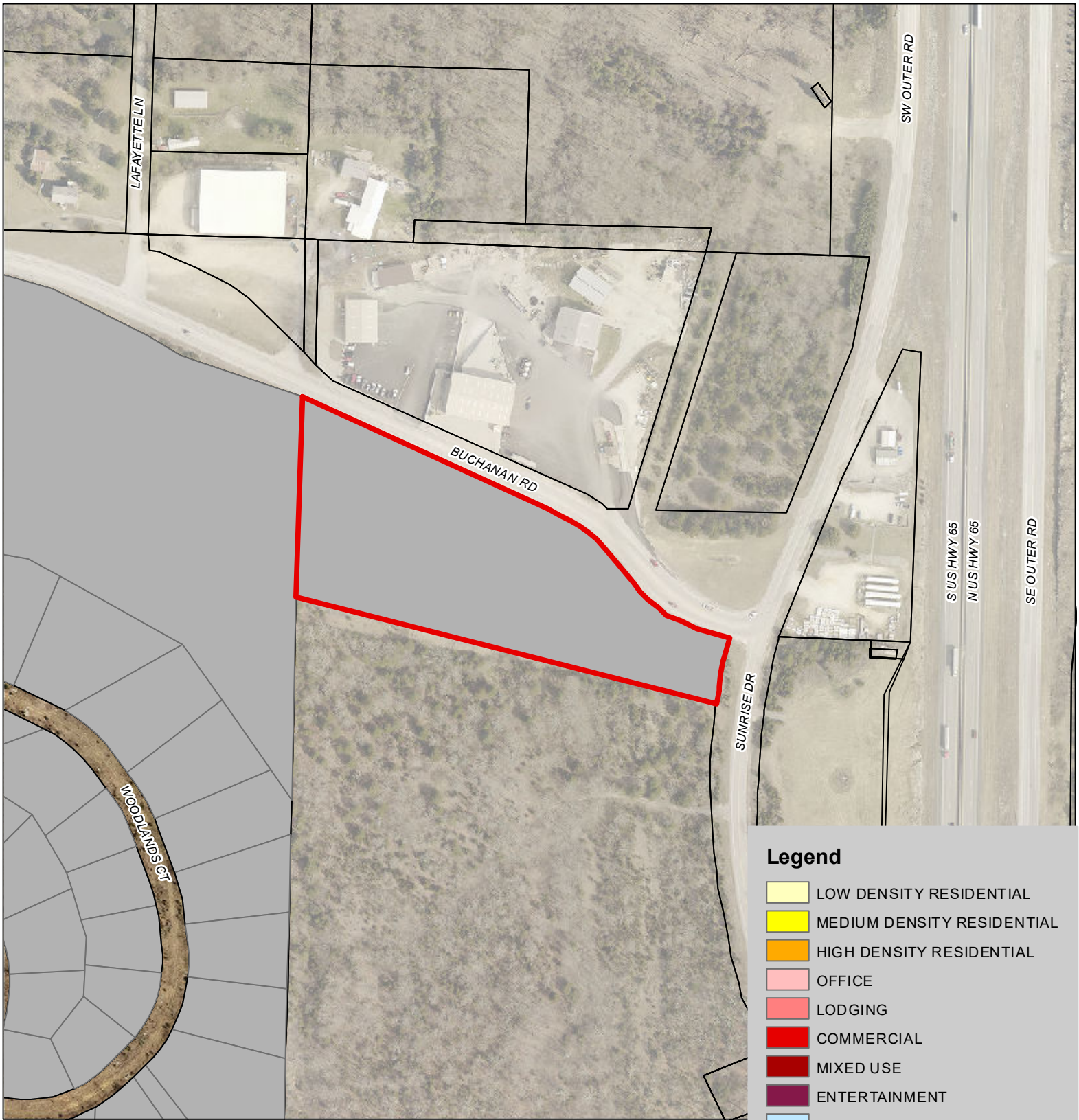


1 inch = 250 feet

City of Branson
Planning & Development

Date: 7/17/2023

297 Buchanan Rd (Proposed Zoning)



N



1 inch = 250 feet

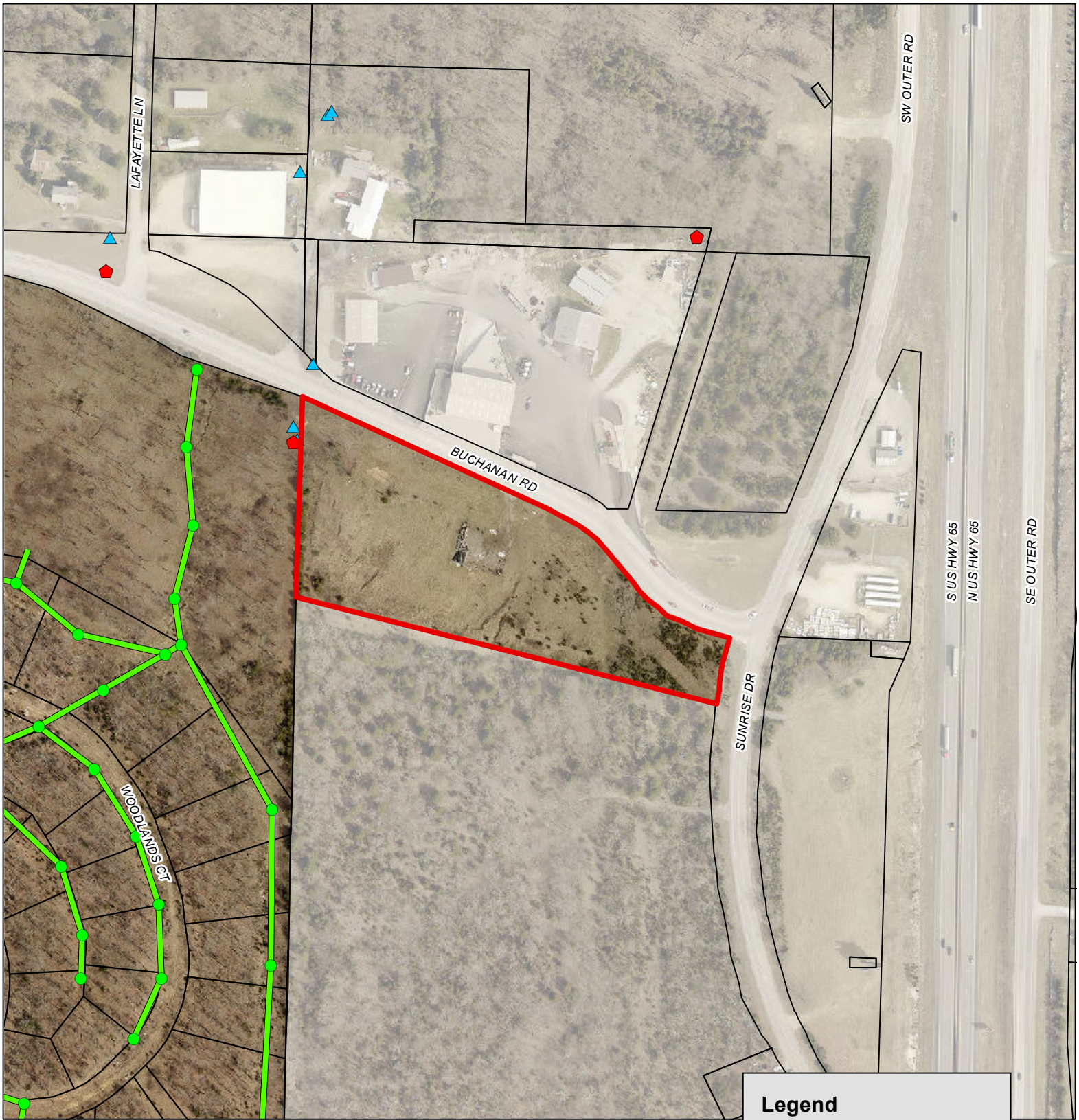
City of Branson
Planning & Development

Date: 7/17/2023

297 Buchanan Rd (Existing Land Use)

Legend

- LOW DENSITY RESIDENTIAL
- MEDIUM DENSITY RESIDENTIAL
- HIGH DENSITY RESIDENTIAL
- OFFICE
- LODGING
- COMMERCIAL
- MIXED USE
- ENTERTAINMENT
- RELIGIOUS ASSEMBLY
- HEALTH CARE
- INSTITUTIONAL
- INDUSTRIAL
- RECREATION
- OPEN SPACE
- AGRICULTURAL
- UTILITIES
- VACANT
- TANEY COUNTY



1 inch = 250 feet

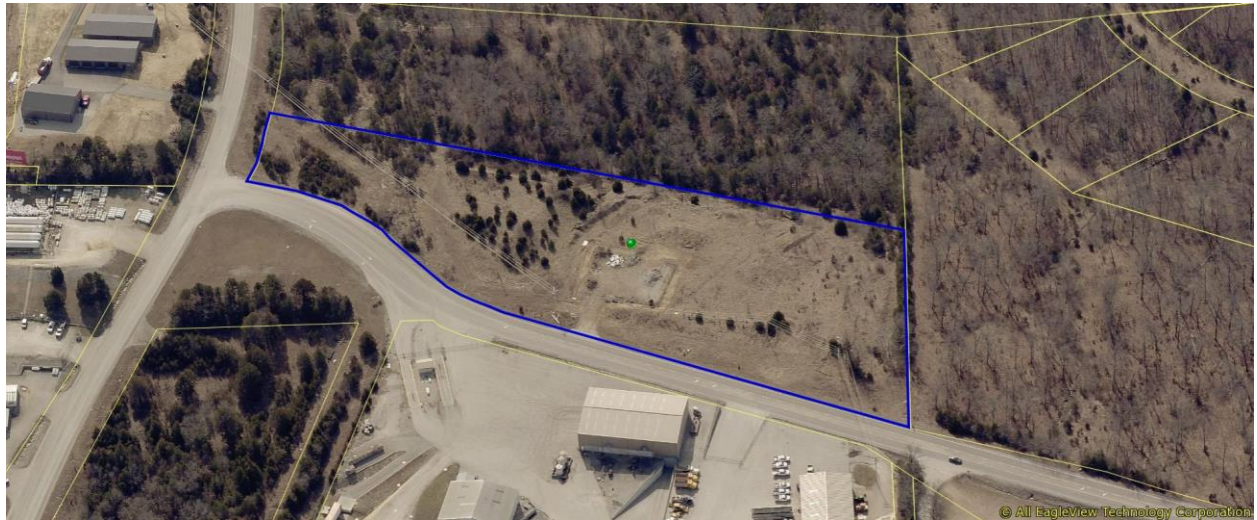
City of Branson
Planning & Development
Date: 7/17/2023

297 Buchanan Rd (Aerial with Utilities)

Legend

- Sanitary Sewer Manholes
- Liftstation
- Sewer Gravity Mains
- Sewer Pressurized Mains
- ◆ Water Hydrants
- ▲ Water System Valves
- Water Mains
- DISTRIBUTION
- TRANSMISSION

View from the North



View from the East



View from the South



View from the West

