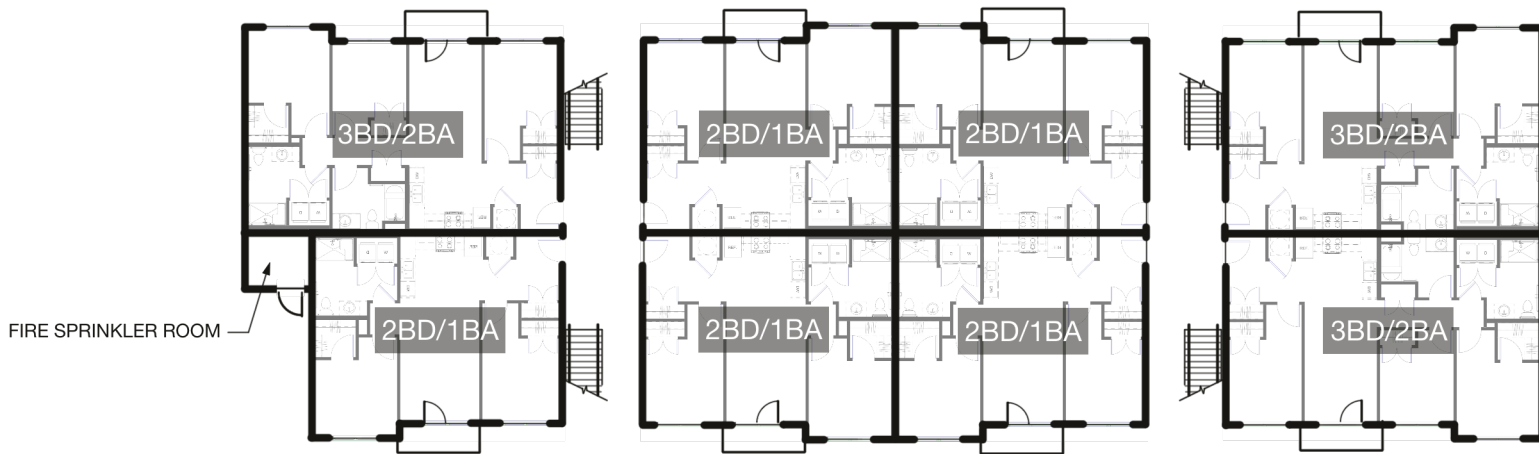


2ND & 3RD FLOOR PLAN



1ST FLOOR PLAN

3-STORY INFORMATION:

24 UNITS = 22,215 NET SQFT.

*DOES NOT INCLUDE BREEZEWAY/DECK

FALL CREEK RIDGE

Branson, MO

WALK-UP BUILDING PLAN

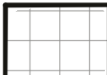

September 22, 2023

*SCALE: 1"=25'-0"


*PRINTED ON 8.5x11 FORMAT

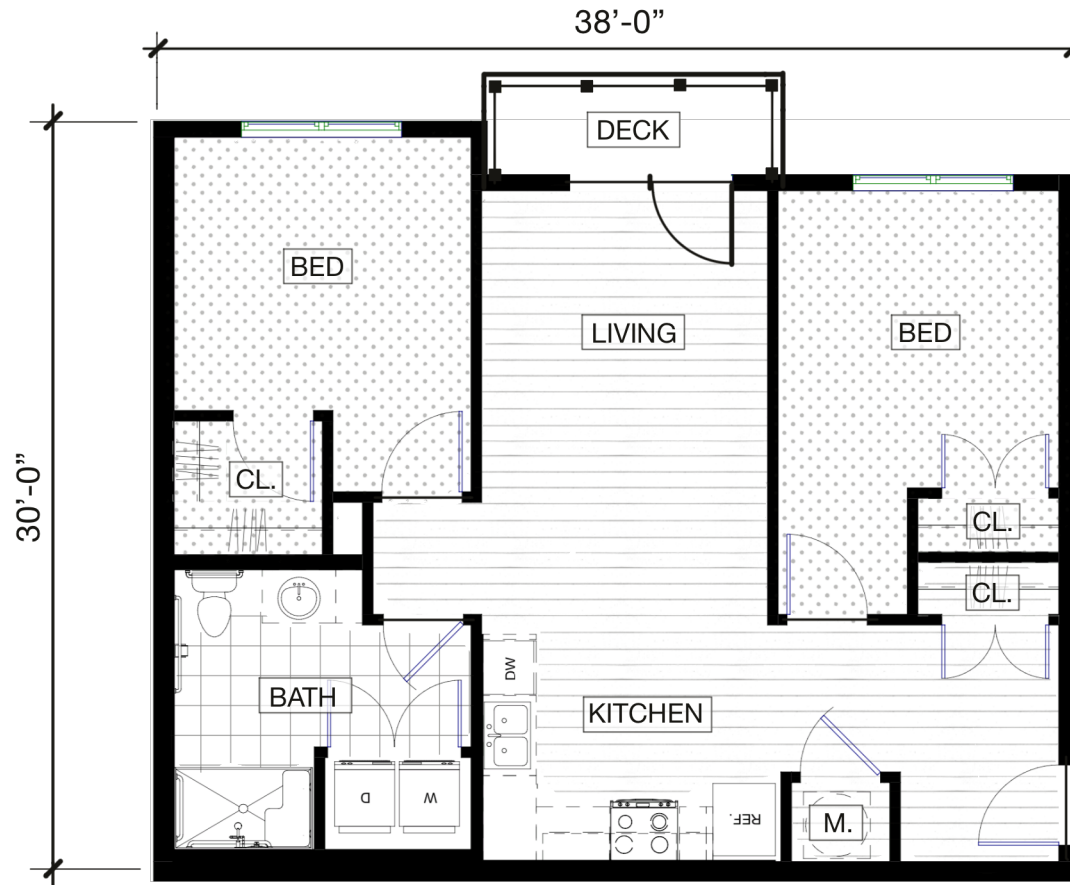
A1



MATERIAL LEGEND:	
	- SHEET VINYL; TYPICAL
	- FITNESS; T.B.D.
	- LUXURY VINYL PLANK; TYPICAL

MATERIAL LEGEND:

-  - SHEET VINYL; TYPICAL
-  - CARPET; TYPICAL
-  - LUXURY VINYL PLANK; TYPICAL



MATERIAL LEGEND:



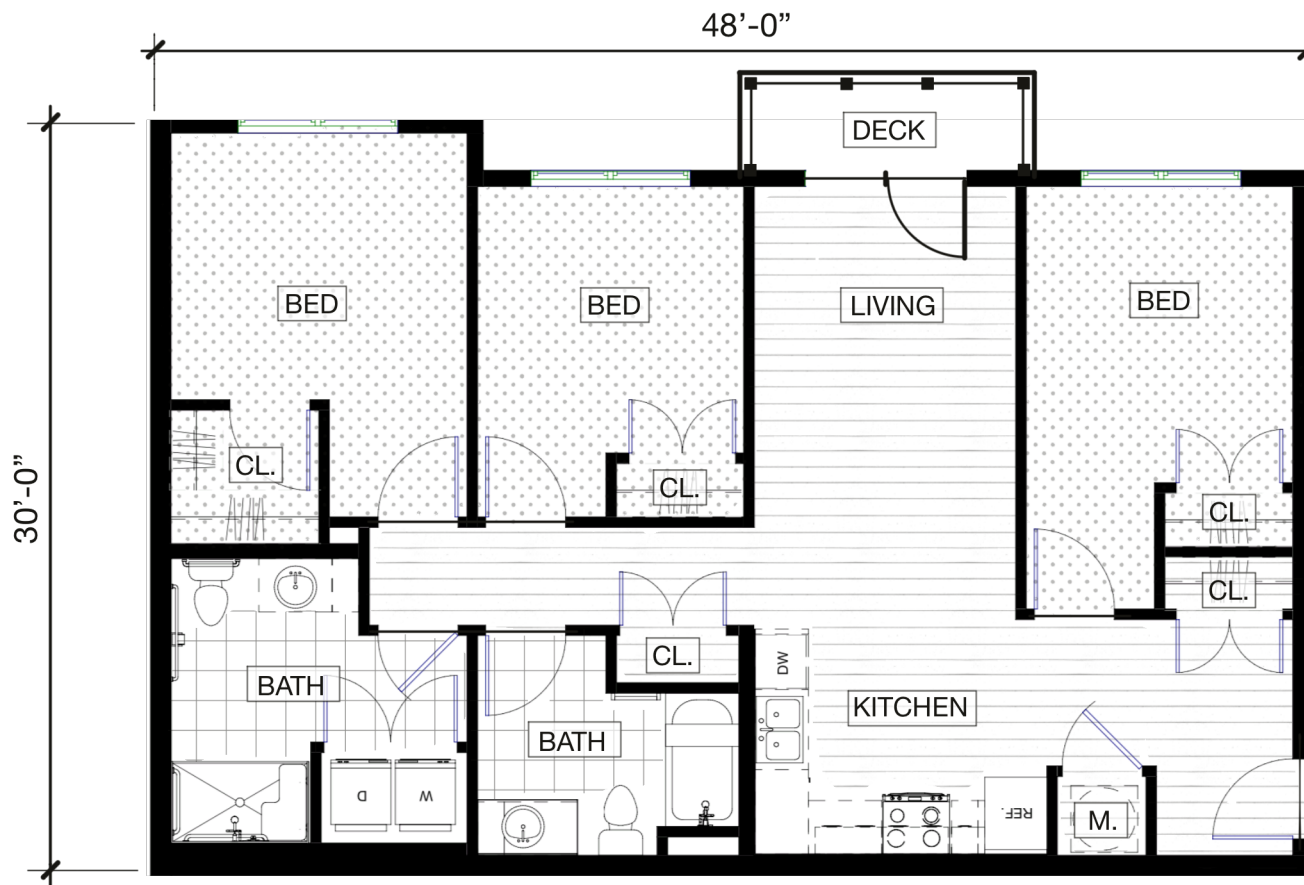
- SHEET VINYL; TYPICAL



- CARPET; TYPICAL



- LUXURY VINYL
PLANK; TYPICAL



FALL CREEK RIDGE

Branson, MO

3BD/2BA UNIT PLAN
1,075 NET SQFT.

September 22, 2023

*SCALE: 1"=8'-0"

*PRINTED ON 8.5x11 FORMAT

A4



FALL CREEK RIDGE

Branson, MO

WALK-UP BUILDING ELEVATION

September 22, 2023

A5

rosemann 
& ASSOCIATES INC.



FALL CREEK RIDGE

Branson, MO

COMMUNITY BUILDING ELEVATION

September 22, 2023

A6

rosemann  & ASSOCIATES INC.