

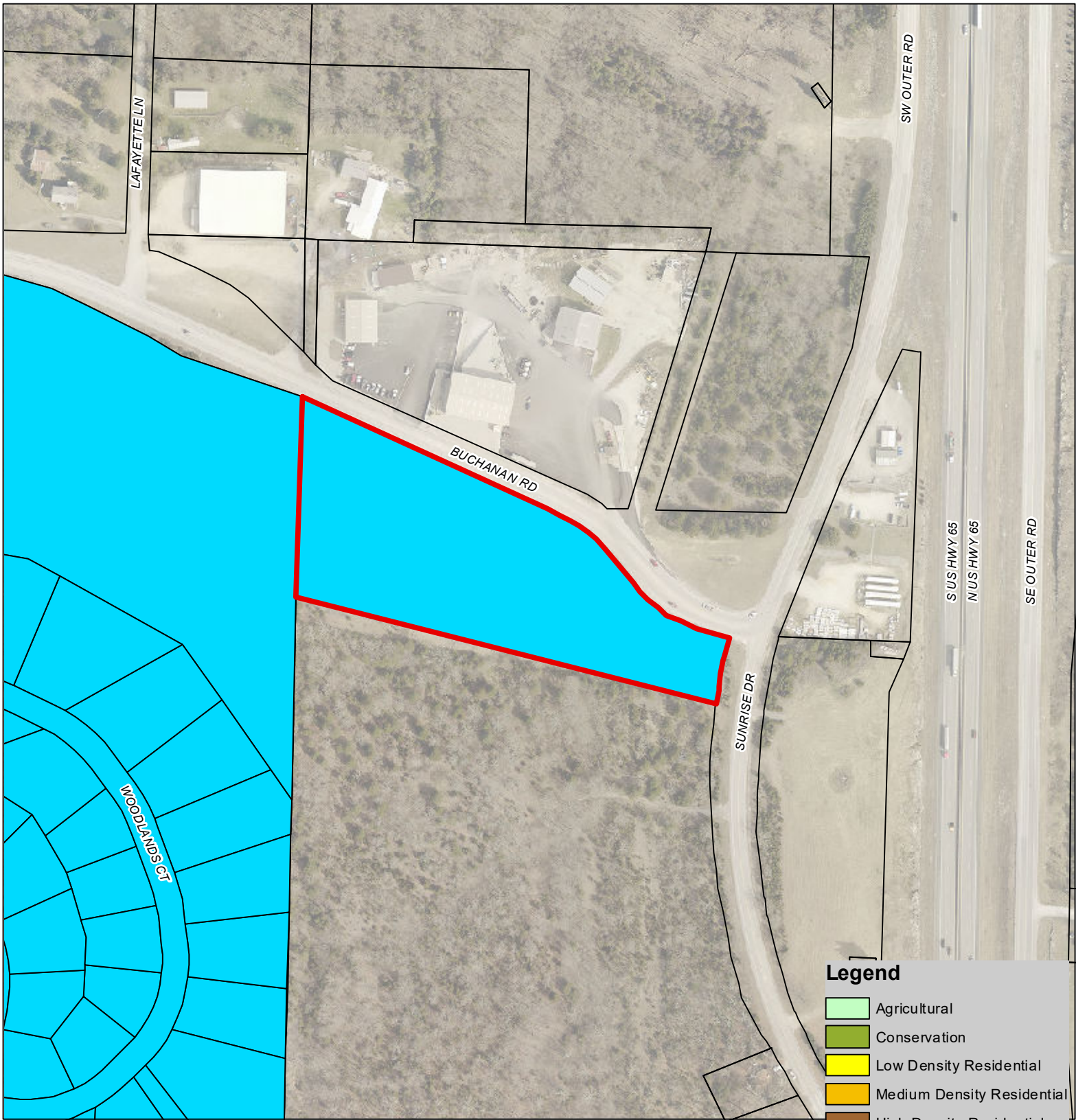
1 inch = 250 feet

City of Branson  
Planning & Development  
Date: 7/17/2023

# 297 Buchanan Rd (Current Zoning)

Legend	
<span style="border: 2px solid purple; display: inline-block; width: 15px; height: 10px;"></span>	SUBJECT_R-O-W_VACATION
<span style="background-color: #90EE90; display: inline-block; width: 15px; height: 10px;"></span>	Agricultural
<span style="background-color: #8FBC8F; display: inline-block; width: 15px; height: 10px;"></span>	Conservation
<span style="background-color: #FFFF00; display: inline-block; width: 15px; height: 10px;"></span>	Low Density Residential
<span style="background-color: #FFA500; display: inline-block; width: 15px; height: 10px;"></span>	Medium Density Residential
<span style="background-color: #D2691E; display: inline-block; width: 15px; height: 10px;"></span>	High Density Residential
<span style="background-color: #FFB6C1; display: inline-block; width: 15px; height: 10px;"></span>	Neighborhood Commercial
<span style="background-color: #FF8C00; display: inline-block; width: 15px; height: 10px;"></span>	Mixed-Use
<span style="background-color: #FF0000; display: inline-block; width: 15px; height: 10px;"></span>	Community Commercial
<span style="background-color: #8B0000; display: inline-block; width: 15px; height: 10px;"></span>	Downtown
<span style="background-color: #800080; display: inline-block; width: 15px; height: 10px;"></span>	Entertainment
<span style="background-color: #00008B; display: inline-block; width: 15px; height: 10px;"></span>	Business
<span style="background-color: #9370DB; display: inline-block; width: 15px; height: 10px;"></span>	Industrial
<span style="background-color: #00BFFF; display: inline-block; width: 15px; height: 10px;"></span>	Planned Development
<span style="background-color: #FFFF00; display: inline-block; width: 15px; height: 10px;"></span>	Unzoned





N



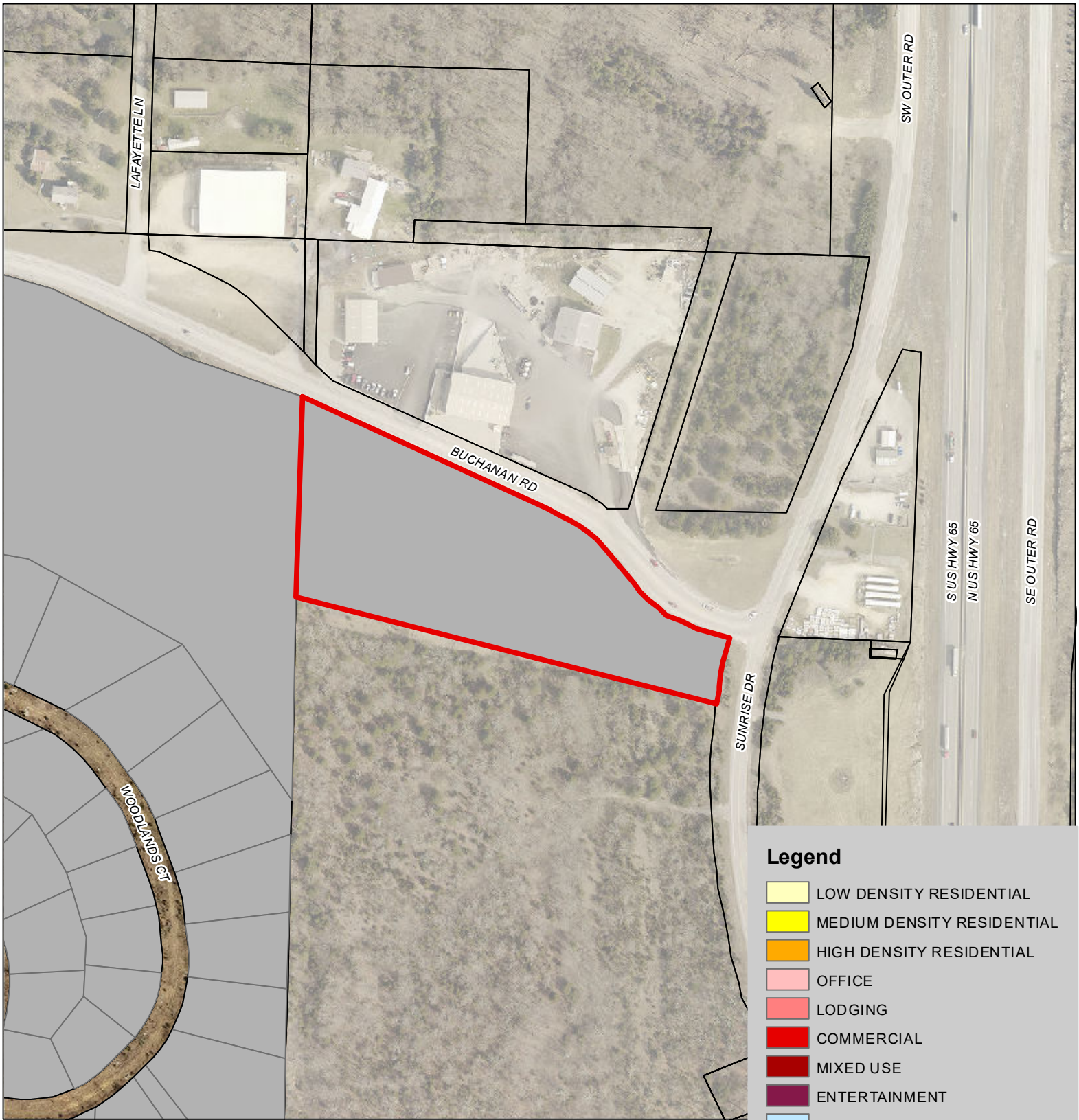
1 inch = 250 feet

City of Branson  
Planning & Development

Date: 7/17/2023

## 297 Buchanan Rd (Proposed Zoning)





### Legend

- LOW DENSITY RESIDENTIAL
- MEDIUM DENSITY RESIDENTIAL
- HIGH DENSITY RESIDENTIAL
- OFFICE
- LODGING
- COMMERCIAL
- MIXED USE
- ENTERTAINMENT
- RELIGIOUS ASSEMBLY
- HEALTH CARE
- INSTITUTIONAL
- INDUSTRIAL
- RECREATION
- OPEN SPACE
- AGRICULTURAL
- UTILITIES
- VACANT
- TANEY COUNTY

N

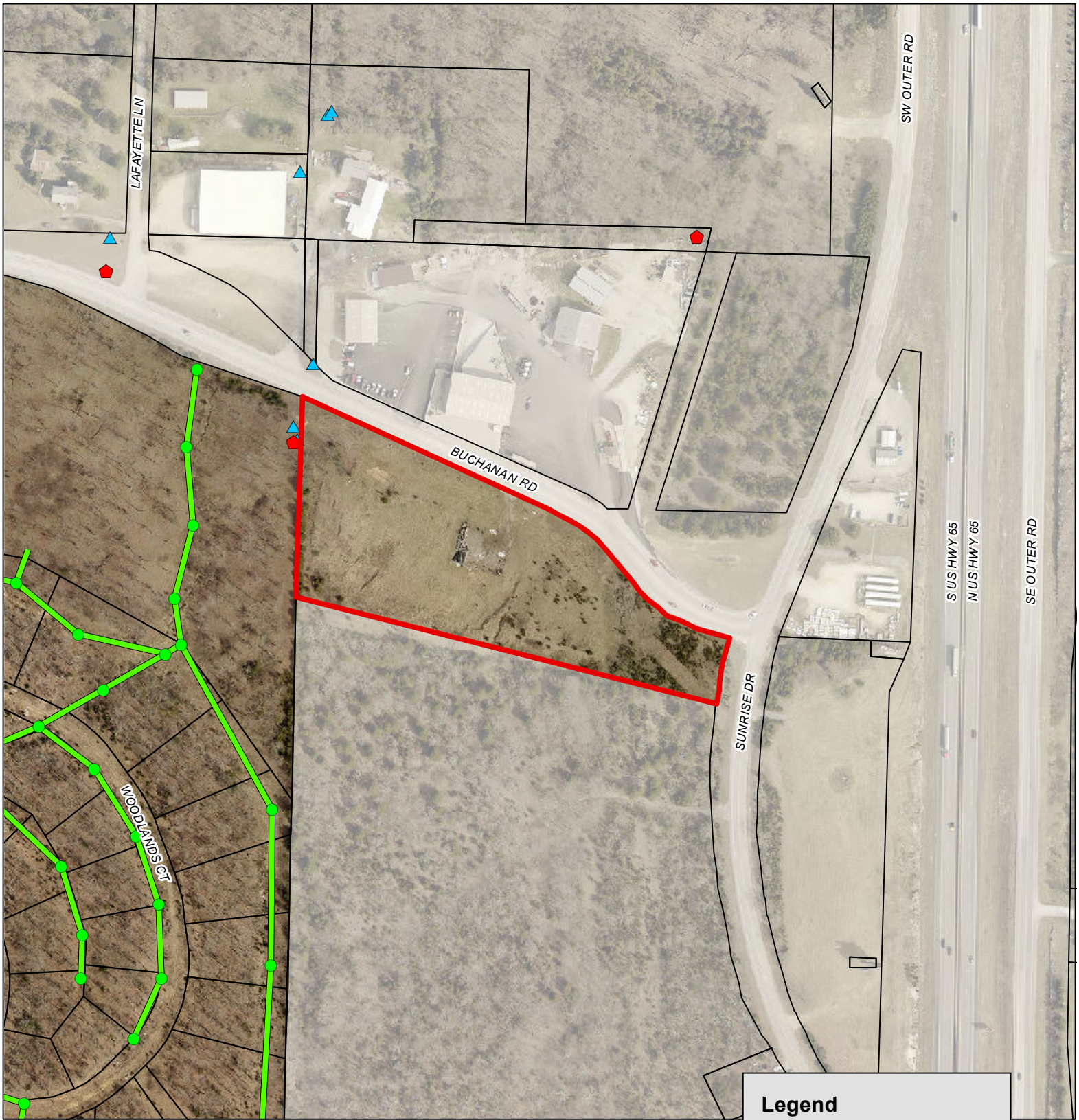
1 inch = 250 feet

City of Branson  
Planning & Development

Date: 7/17/2023

## 297 Buchanan Rd (Existing Land Use)





### Legend

- Sanitary Sewer Manholes
- Liftstation
- Sewer Gravity Mains
- Sewer Pressurized Mains
- ◆ Water Hydrants
- ▲ Water System Valves
- Water Mains
- DISTRIBUTION
- TRANSMISSION



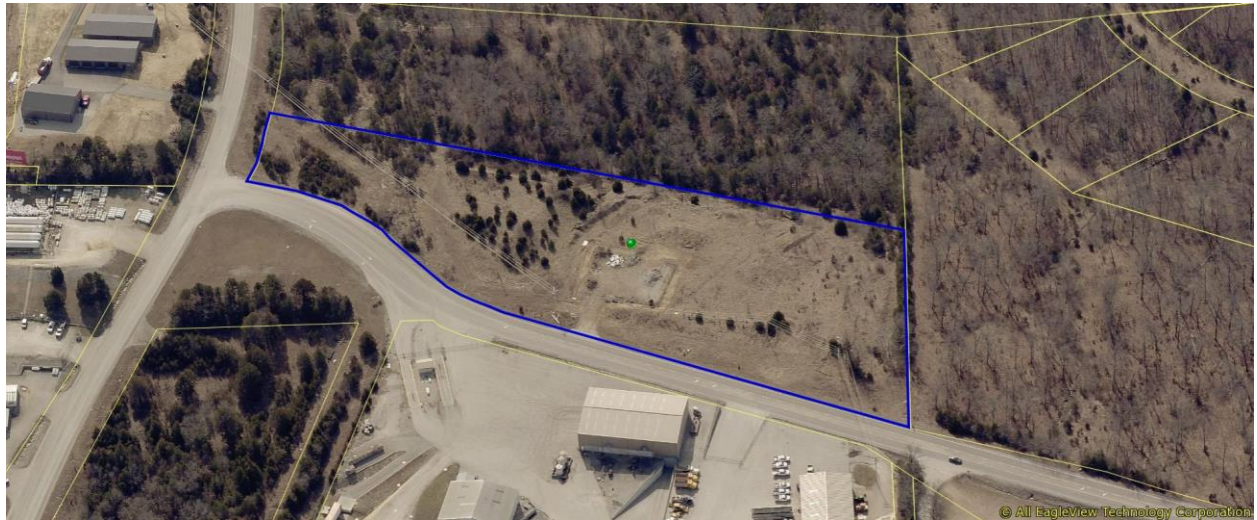
1 inch = 250 feet

City of Branson  
Planning & Development  
Date: 7/17/2023

## 297 Buchanan Rd (Aerial with Utilities)



**View from the North**



**View from the East**





**View from the South**



**View from the West**

