

- Legend**
- SUBJECT_R-O-W_VACATION
 - Agricultural
 - Conservation
 - Low Density Residential
 - Medium Density Residential
 - High Density Residential
 - Neighborhood Commercial
 - Mixed-Use
 - Community Commercial
 - Downtown
 - Entertainment
 - Business
 - Industrial
 - Planned Development
 - Unzoned

123 Beth Page Ct (Current Zoning)



- Legend**
- Agricultural
 - Conservation
 - Low Density Residential
 - Medium Density Residential
 - High Density Residential
 - Neighborhood Commercial
 - Mixed-Use
 - Community Commercial
 - Downtown
 - Entertainment
 - Business
 - Industrial
 - Planned Development
 - Unzoned

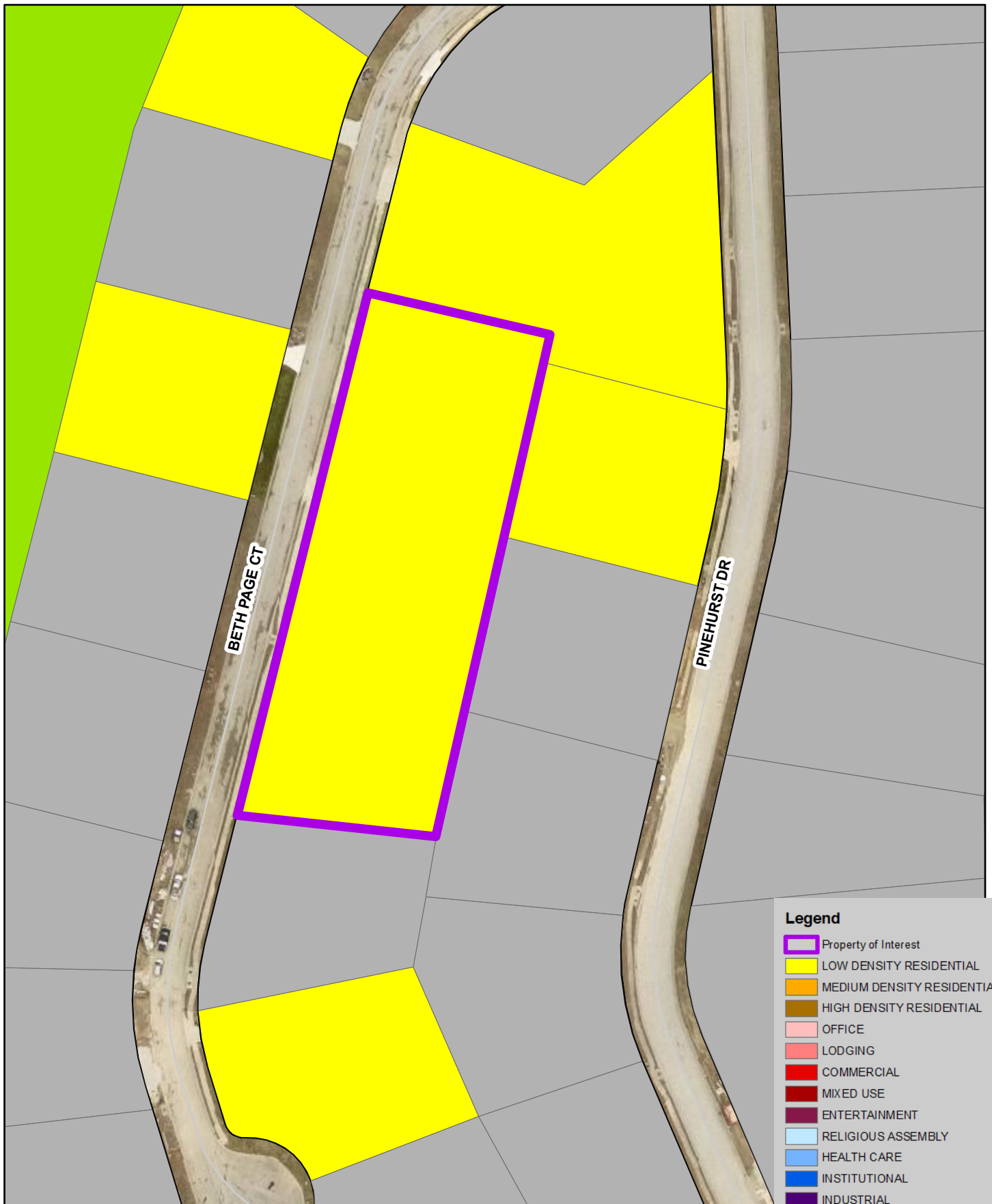


1 inch = 100 feet

City of Branson
Planning & Development

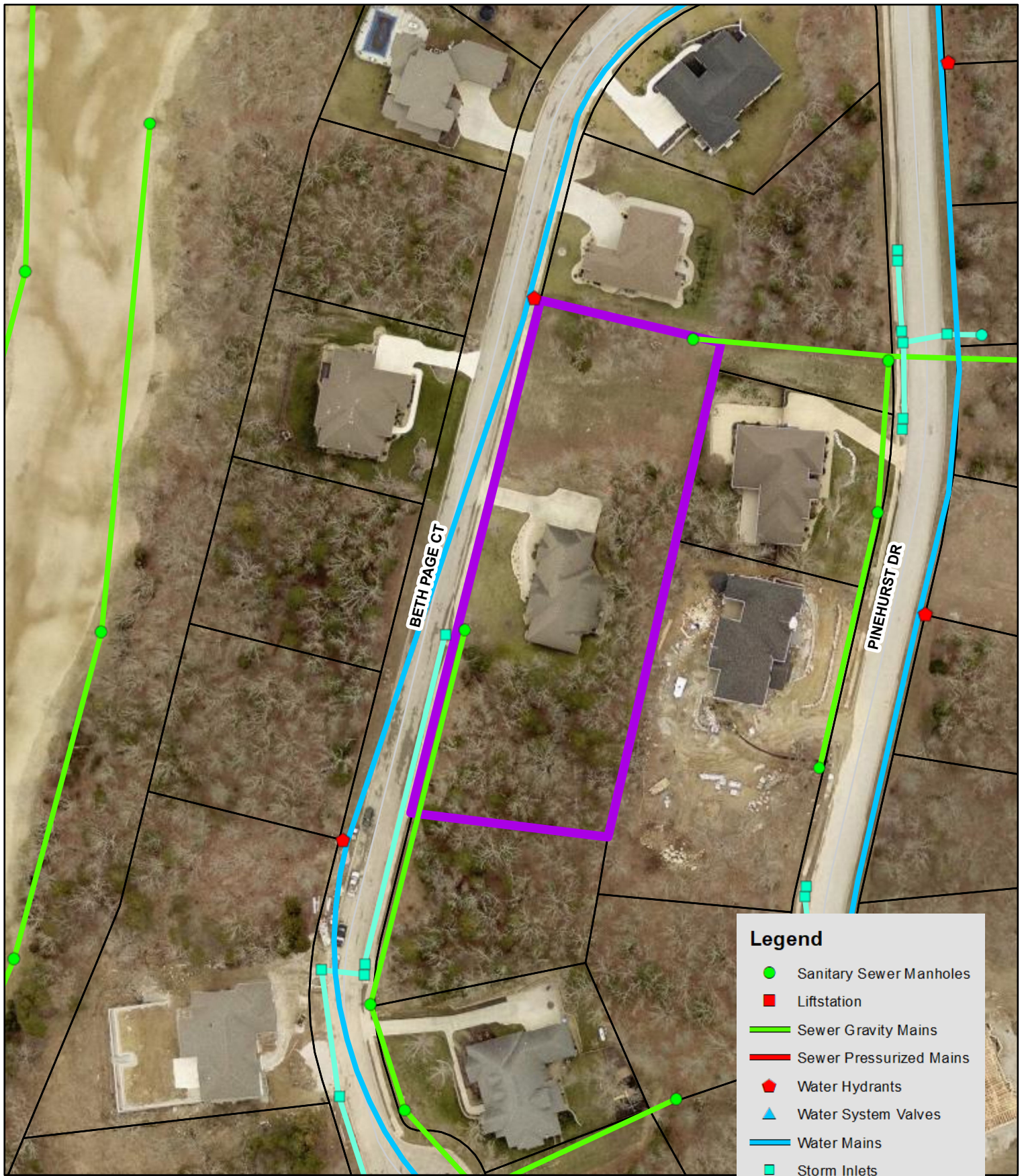
Date: 4/19/2024

**123 Beth Page Ct
(Proposed Zoning)**



Legend

- Property of Interest
- LOW DENSITY RESIDENTIAL
- MEDIUM DENSITY RESIDENTIAL
- HIGH DENSITY RESIDENTIAL
- OFFICE
- LODGING
- COMMERCIAL
- MIXED USE
- ENTERTAINMENT
- RELIGIOUS ASSEMBLY
- HEALTH CARE
- INSTITUTIONAL
- INDUSTRIAL
- RECREATION
- OPEN SPACE
- AGRICULTURAL
- UTILITIES
- VACANT
- TANEY COUNTY



Legend

- Sanitary Sewer Manholes
- Liftstation
- Sewer Gravity Mains
- Sewer Pressurized Mains
- Water Hydrants
- Water System Valves
- Water Mains
- Storm Inlets
- Storm Intake Structures
- Storm Outfall Structures
- Storm Sewer Pipes
- Gas Distribution
- Gas Transmission
- Property of Interest

N

1 inch = 100 feet

City of Branson
Planning & Development

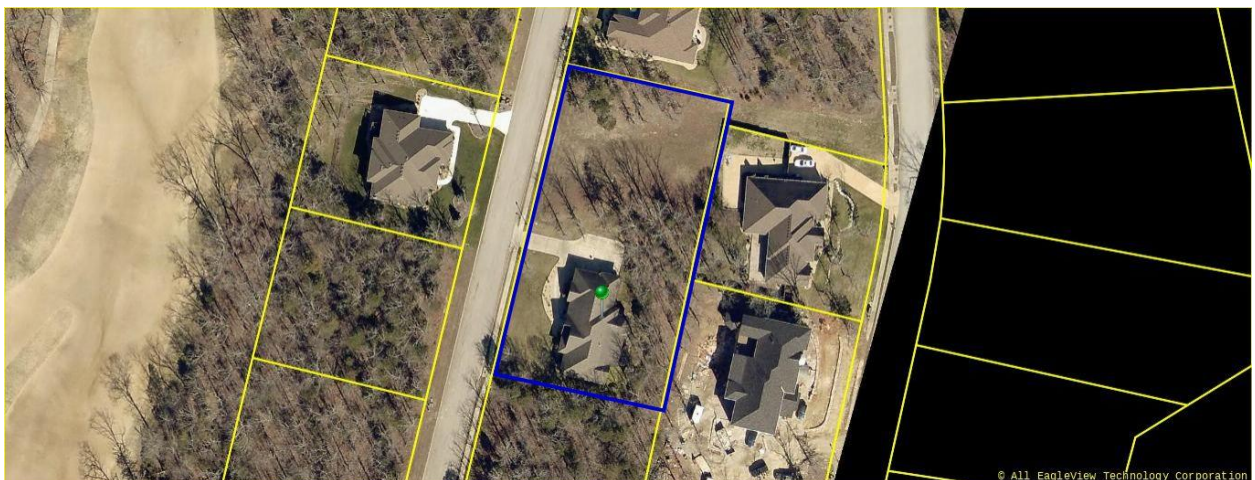
Date: 4/19/2024

123 Beth Page Ct
(Aerial with Utilities)

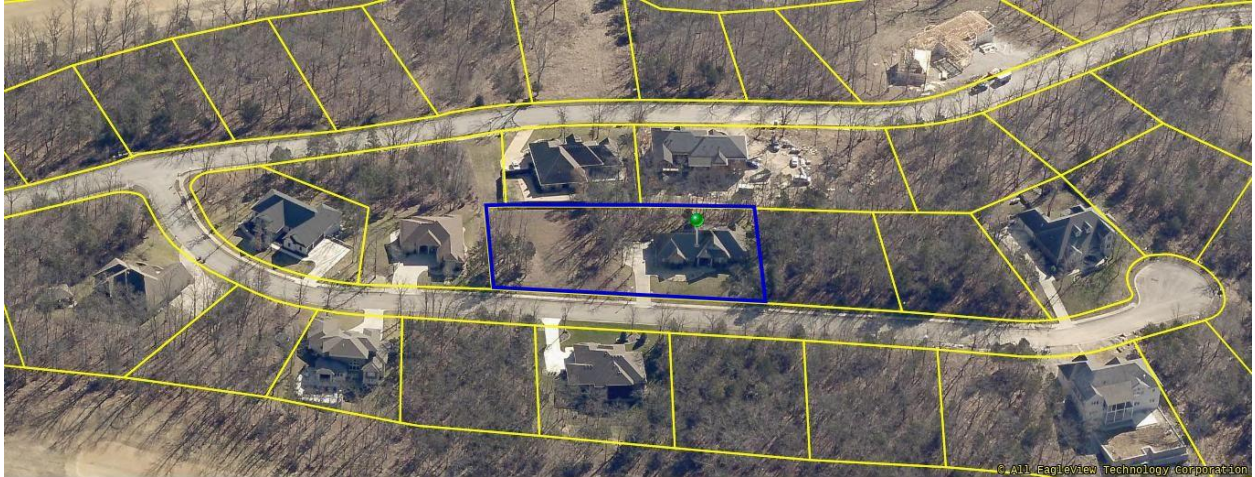
View from the North



View from the South



View from the West



View from the East

