

### Legend

- Agricultural
- Conservation
- Low Density Residential
- Medium Density Residential
- High Density Residential
- Neighborhood Commercial
- Mixed-Use
- Community Commercial
- Downtown
- Entertainment
- Business
- Industrial
- Planned Development
- Unzoned

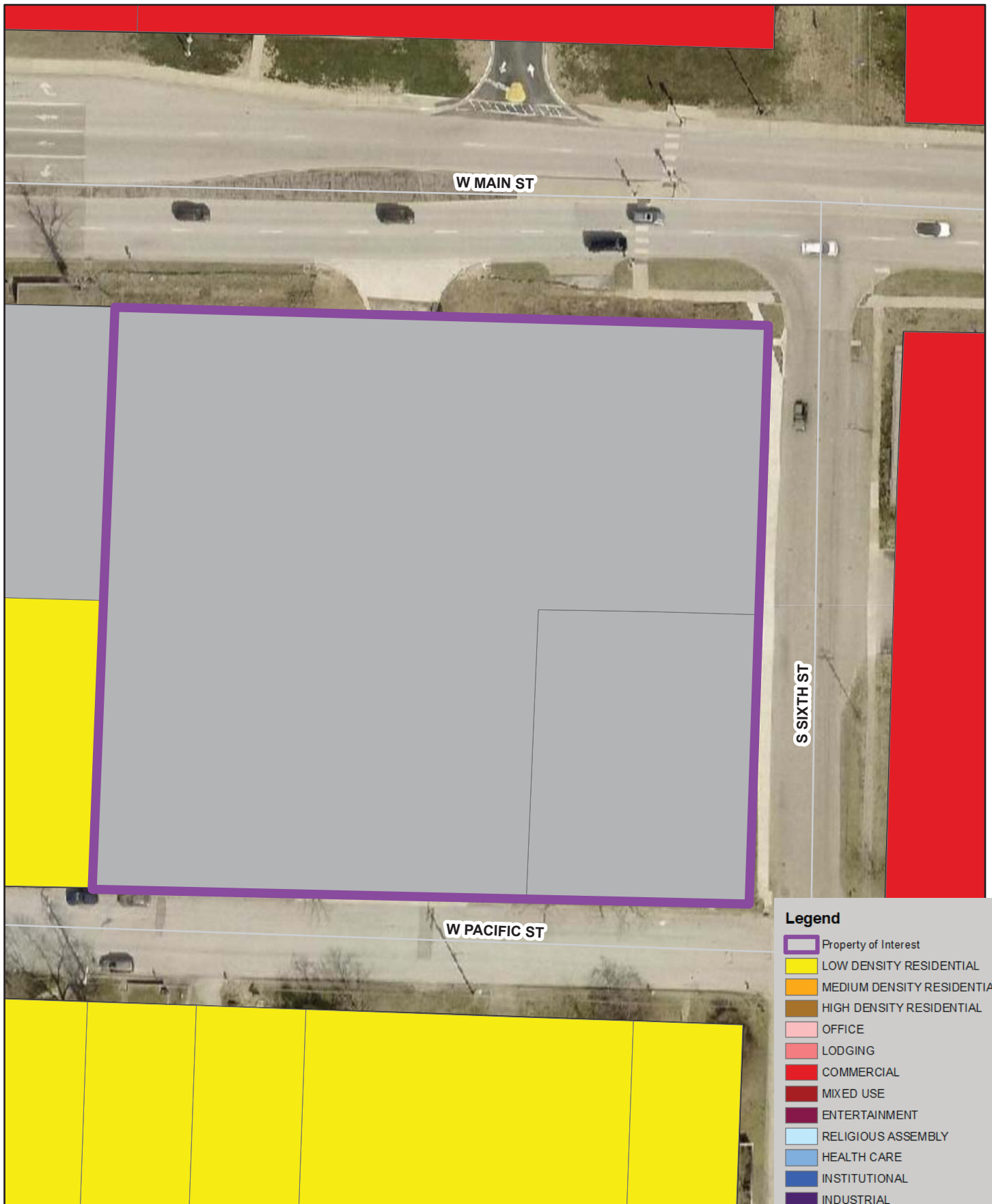
N

1 inch = 60 feet

City of Branson  
Planning & Development

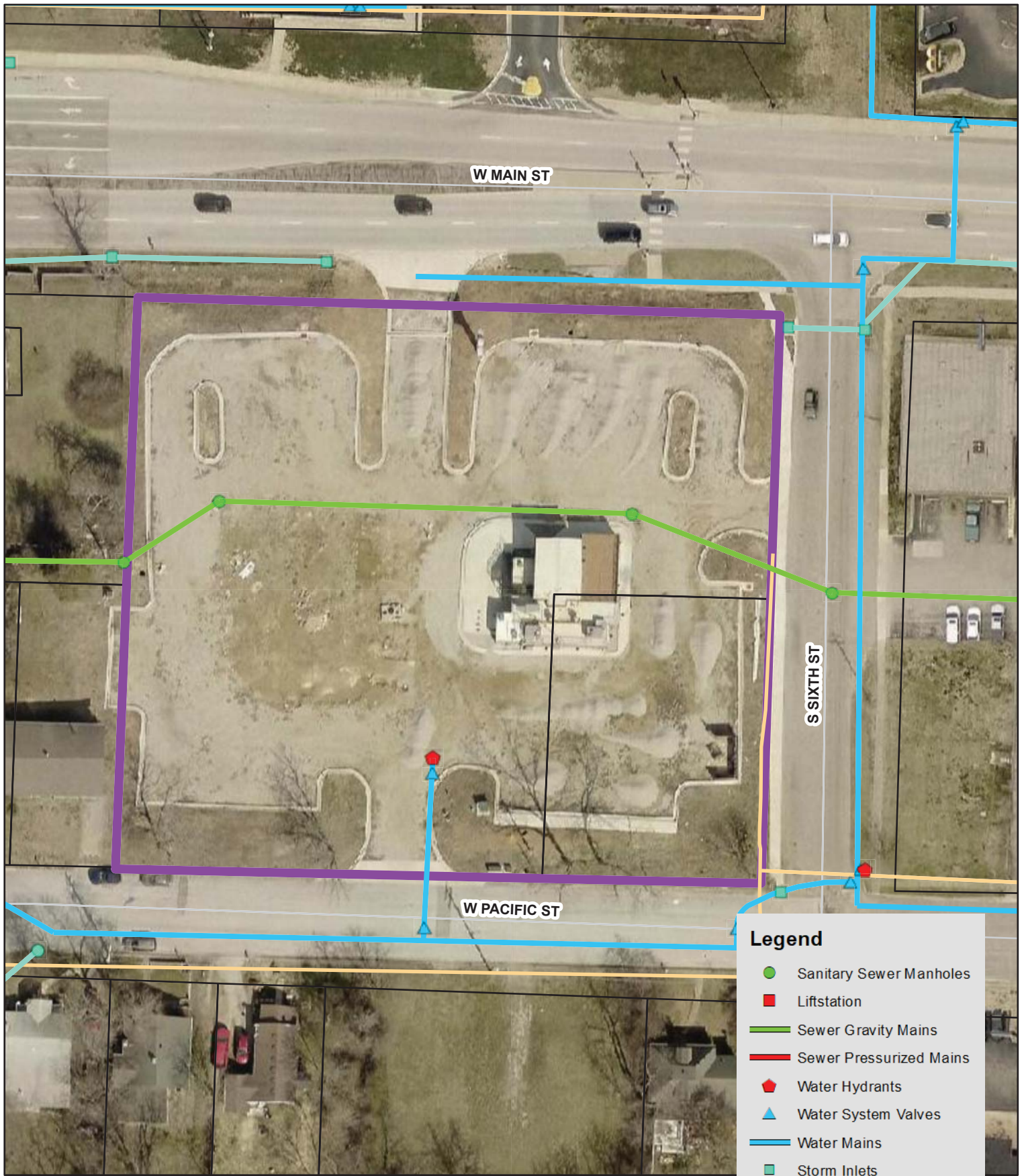
Date: 4/19/2024

**600 W Main St**  
**(Proposed Zoning)**



Legend	
	Property of Interest
	LOW DENSITY RESIDENTIAL
	MEDIUM DENSITY RESIDENTIAL
	HIGH DENSITY RESIDENTIAL
	OFFICE
	LODGING
	COMMERCIAL
	MIXED USE
	ENTERTAINMENT
	RELIGIOUS ASSEMBLY
	HEALTH CARE
	INSTITUTIONAL
	INDUSTRIAL
	RECREATION
	OPEN SPACE
	AGRICULTURAL
	UTILITIES
	VACANT
	TANEY COUNTY





### Legend

- Sanitary Sewer Manholes
- Liftstation
- Sewer Gravity Mains
- Sewer Pressurized Mains
- ⬠ Water Hydrants
- ▲ Water System Valves
- Water Mains
- Storm Inlets
- ▼ Storm Intake Structures
- Storm Outfall Structures
- Storm Sewer Pipes
- Gas Distribution
- Gas Transmission
- Property of Interest

N

1 inch = 60 feet

City of Branson  
Planning & Development

Date: 4/19/2024

## 600 W Main St (Aerial with Utilities)

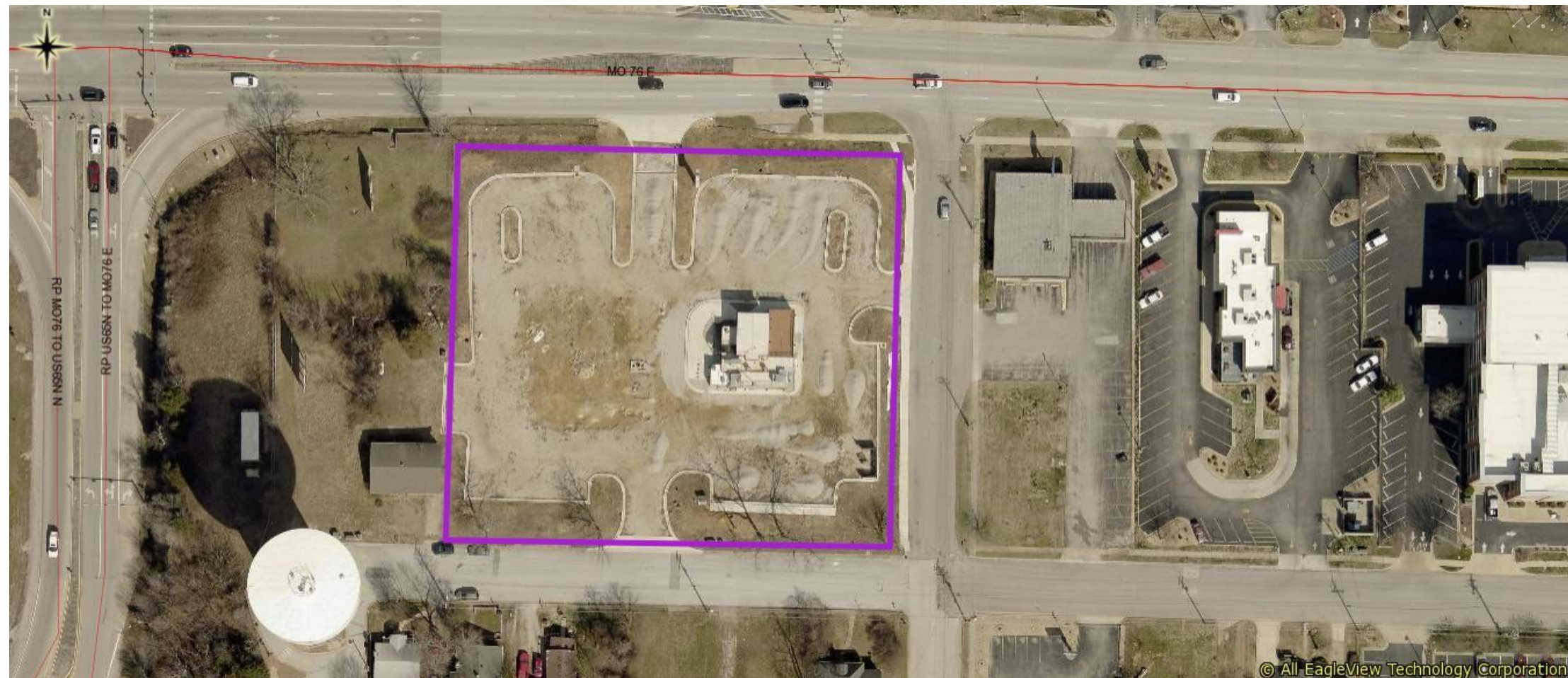


# View From the North- 600 W Main St





# View From the South- 600 W Main St



© All EagleView Technology Corporation



# View From the West- 600 W Main St



© All EagleView Technology Corporation



# View From the East- 600 W Main St



© All EagleView Technology Corporation