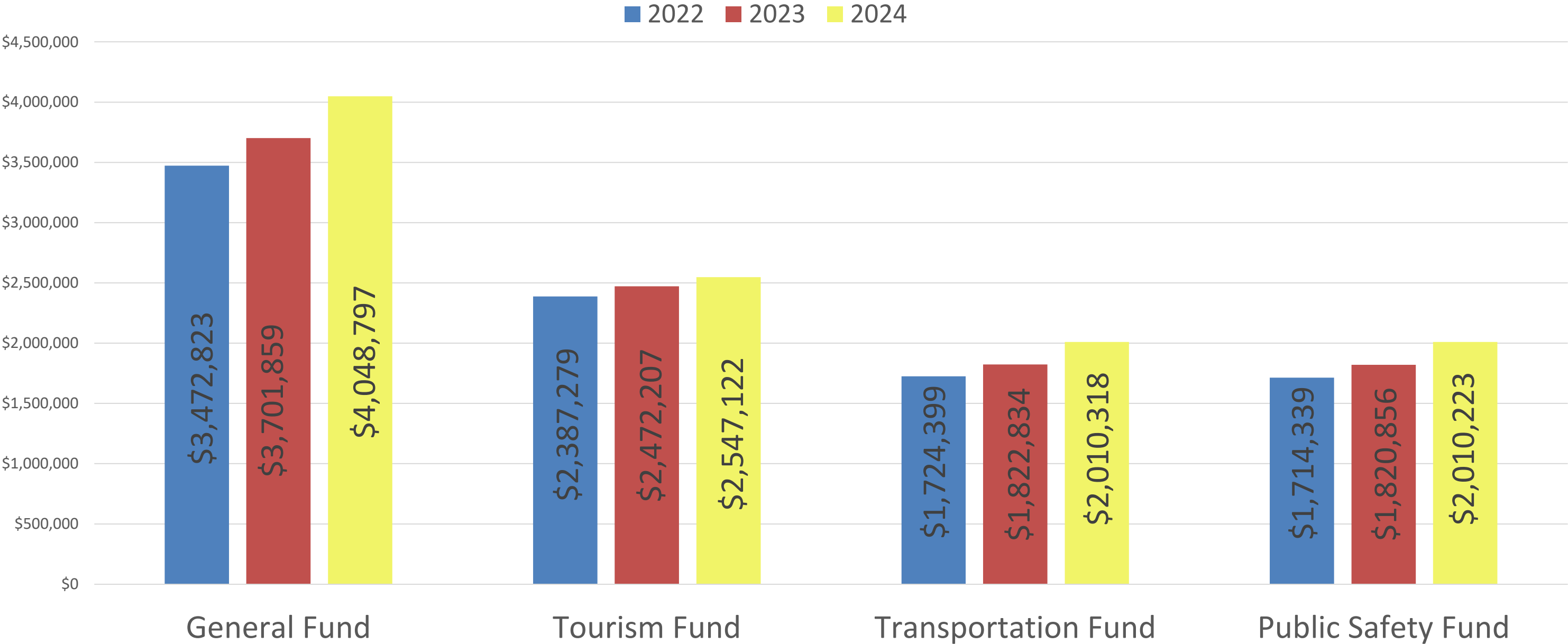




# 1st Quarter Financial Update

January 1, 2024 – March 31, 2024

Gross Sales Tax for all Governmental Funds  
YTD 3/31/24



- General Fund Sales Tax Increased 9.4% in 2024 compared to 2023
- Tourism Fund Tax Increased 3.3% in 2024 compared to 2023
- Transportation Fund Tax Increased 10.3% in 2024 compared to 2023
- Public Safety Tax Increased 10.9% in 2024 compared to 2023

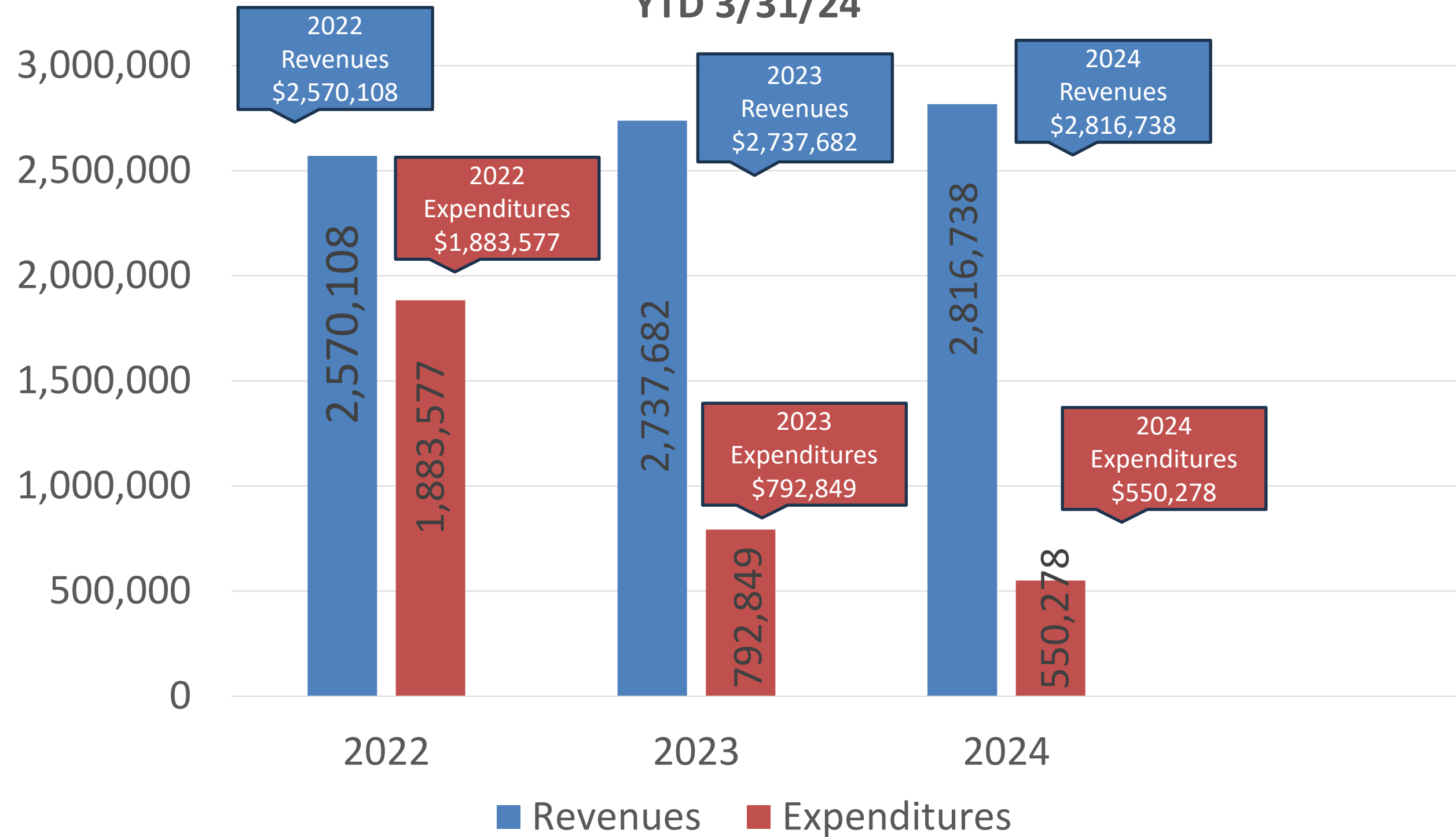


General Fund Revenues & Expenditures  
- YTD 3/31/24  
(includes transfers in/out)



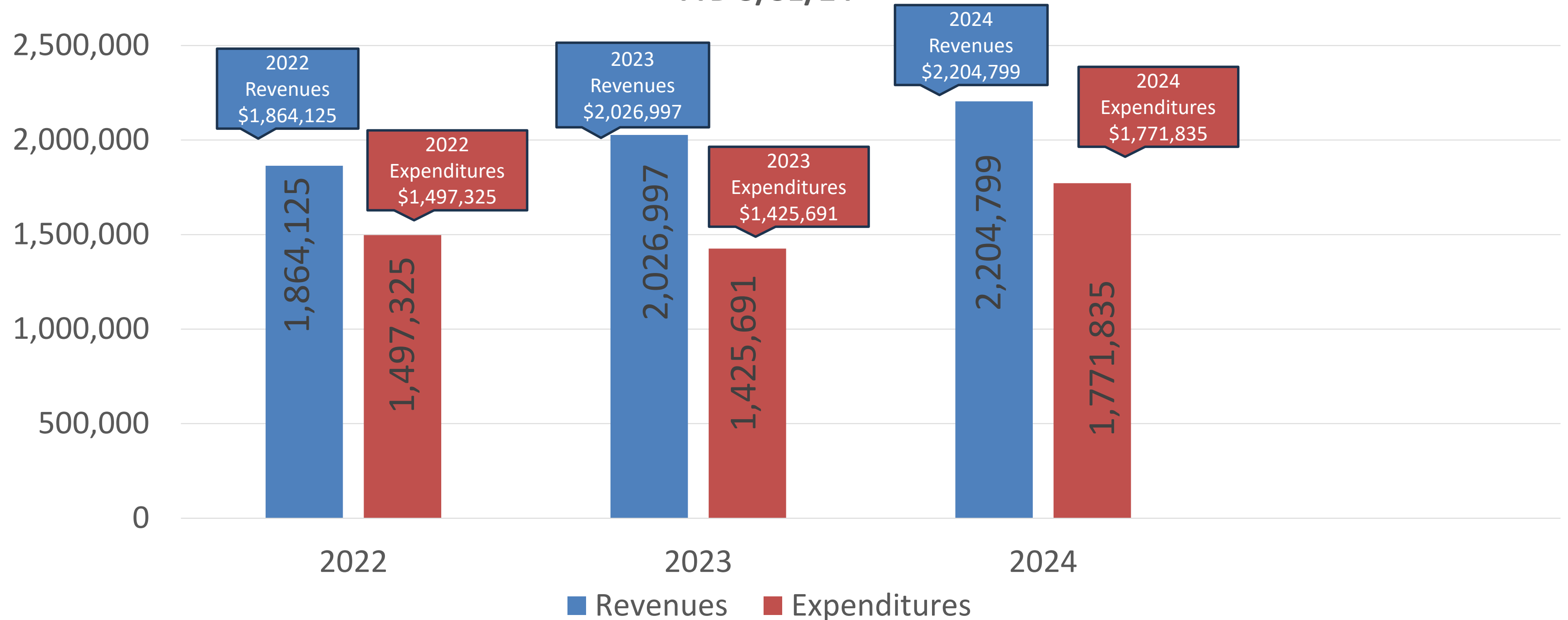
- 2024 YTD Revenues increased by \$454,427 from 2023
- 2024 YTD Expenditures increased by \$154,226 from 2023
- 2024 YTD Ending Fund balance \$12,596,476

## Tourism Fund including transfers in/out YTD 3/31/24



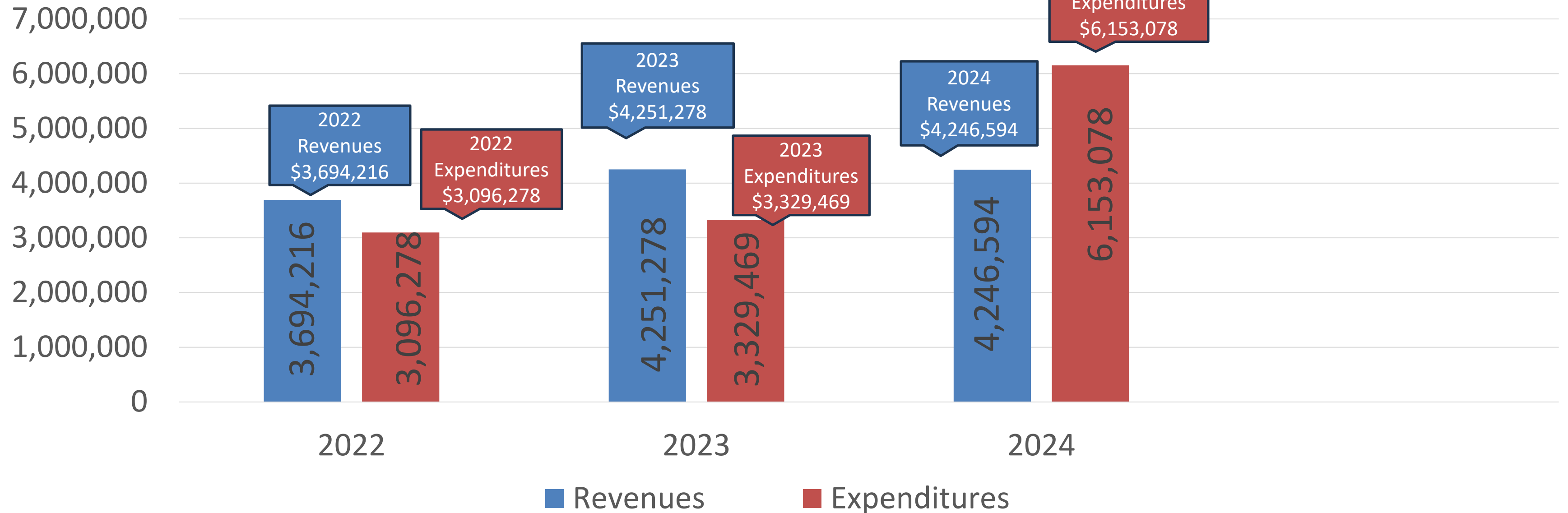
- 2024 YTD Revenues and Transfer in, are \$79,056 higher than 2023
- 2024 YTD Expenditures and Transfers out, are \$242,571 lower than 2023
- 2024 YTD Ending Fund Balance \$33,075,519

## Transportation Fund including transfers in/out YTD 3/31/24



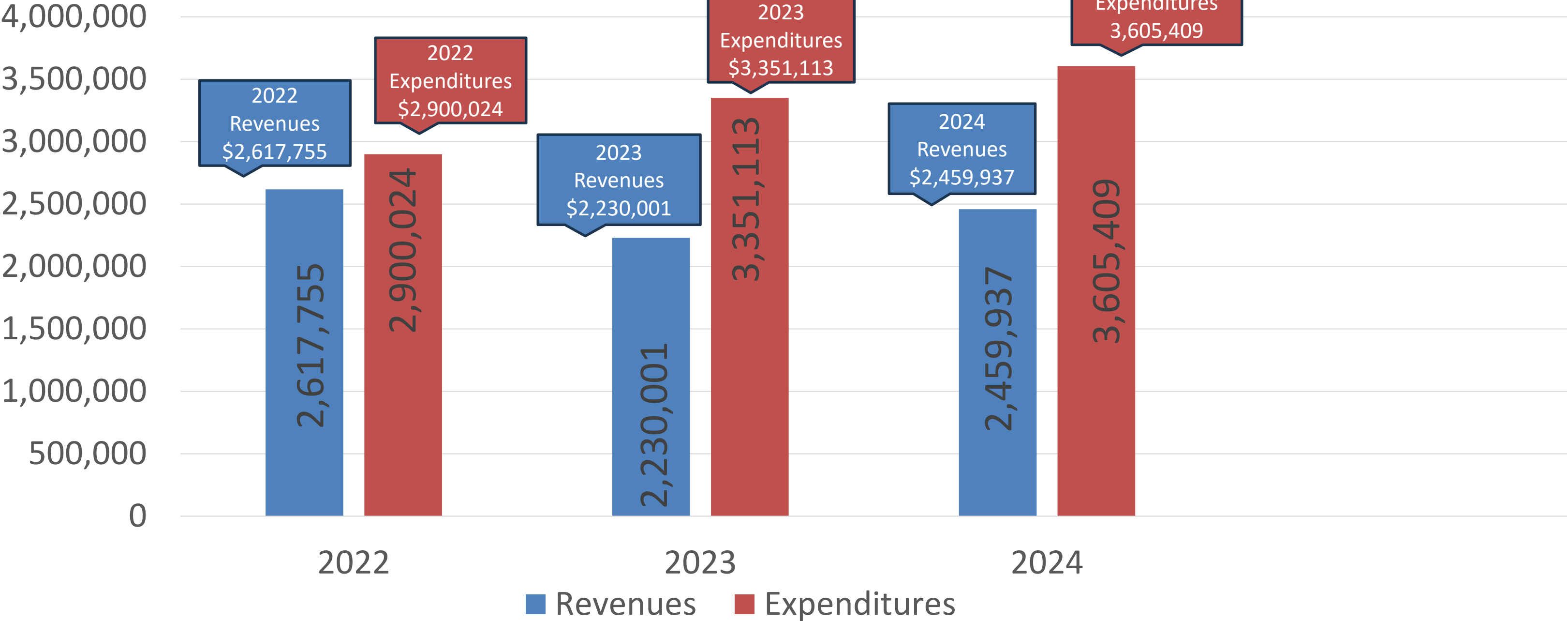
- 2024 YTD Revenues and Transfer in, are \$177,802 higher than 2023
- 2024 YTD Expenditures and Transfers out, are \$346,144 higher than 2023
- *2024 YTD Ending Fund Balance \$6,255,424*

## Public Safety Fund including transfers in/out YTD 3/31/24



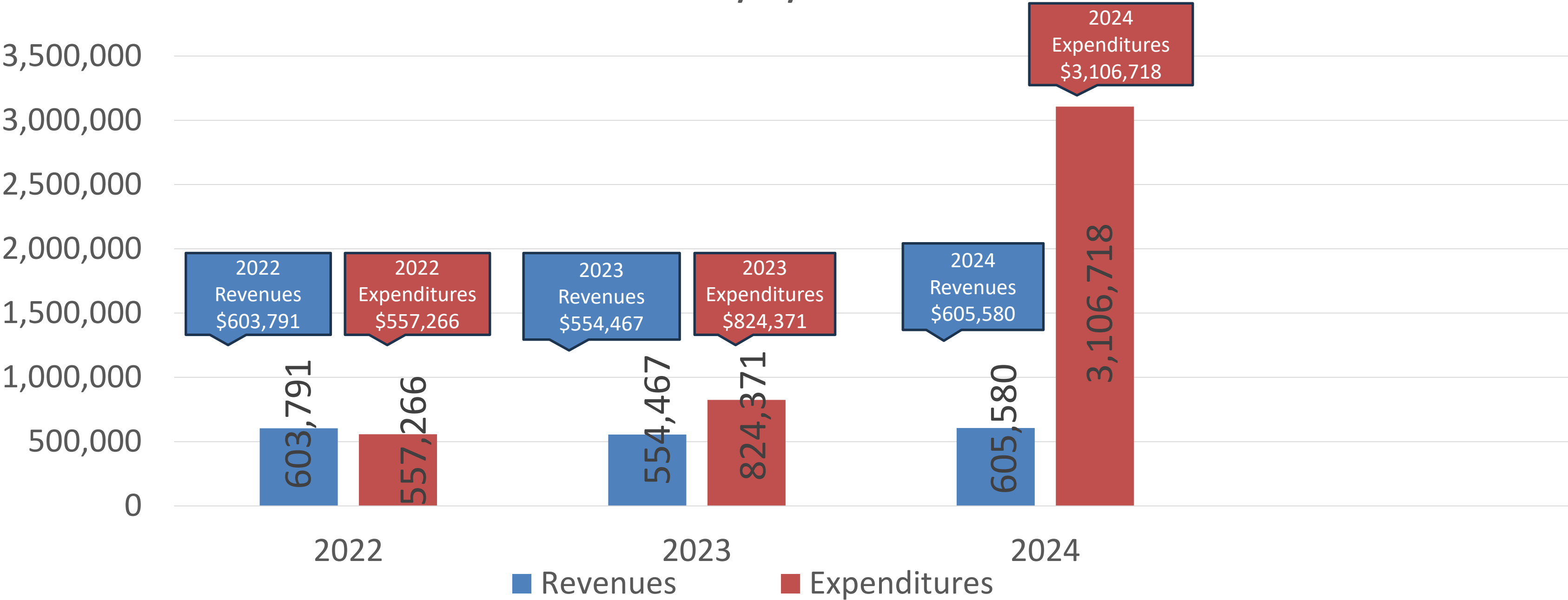
- 2024 YTD Revenues and Transfer in, are \$4,684 lower than 2023
- 2024 YTD Expenditures and Transfer out, are \$2,823,609 higher than 2023. The increase is due to more funds going to Capital Projects for the new Police Station & Fire Station 4.
- 2024 YTD Ending Fund balance \$9,140,607

Water & Sewer YTD 3/31/24  
(Net of Depreciation)



- 2024 YTD Revenues increased \$229,936 from 2023
- 2024 YTD Expenditures increased \$254,296 from 2023  
(The increase in Expenditures is due to increase in Personnel Services)
- 2024 YTD Ending Fund Balance \$56,504,259. Of this balance \$10M is Cash/AR.

Parks & Recreation Fund including transfers in/out  
YTD 3/31/24



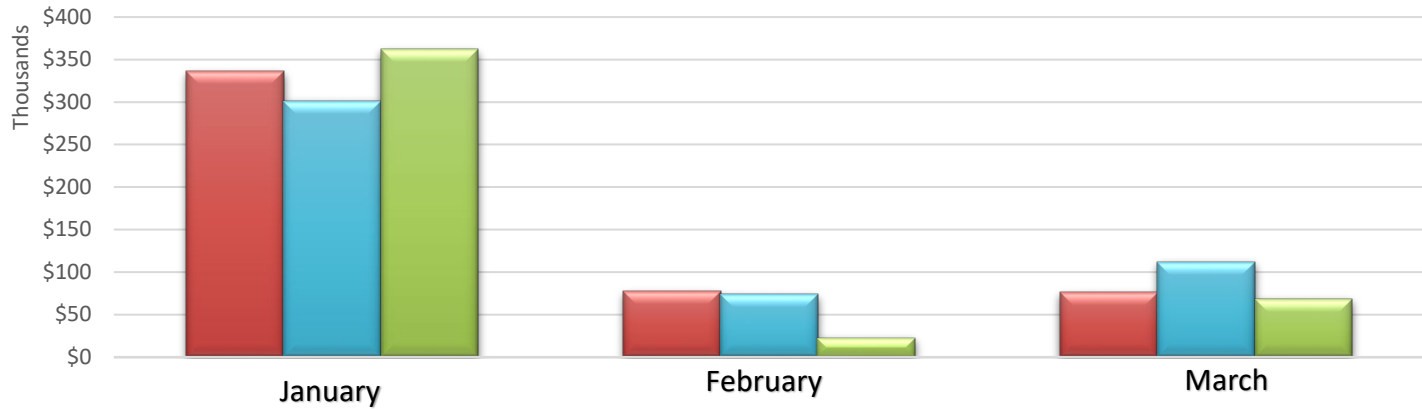
- 2024 YTD Revenues and Transfer in, increased \$51,113 compared to 2023
- 2024 YTD Expenditures and Transfer out, increased \$2,282,347 compared to 2023
- 2024 YTD Expenditures were higher than Revenue mainly do to Transfers to Capital Project fund, for the Campground expansion.



# Tourism Tax by Class (Actual Collections)

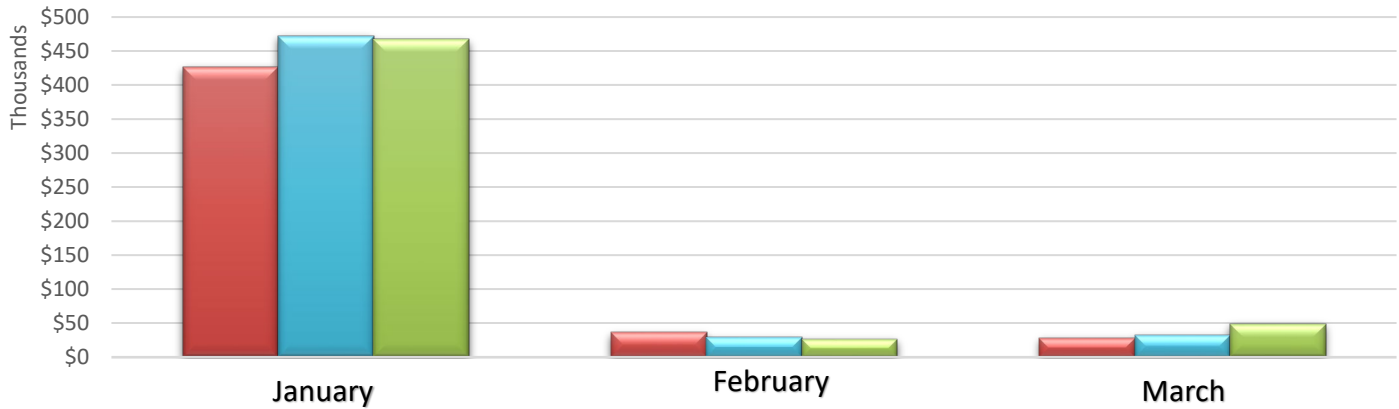
AMUSEMENTS

2022 2023 2024



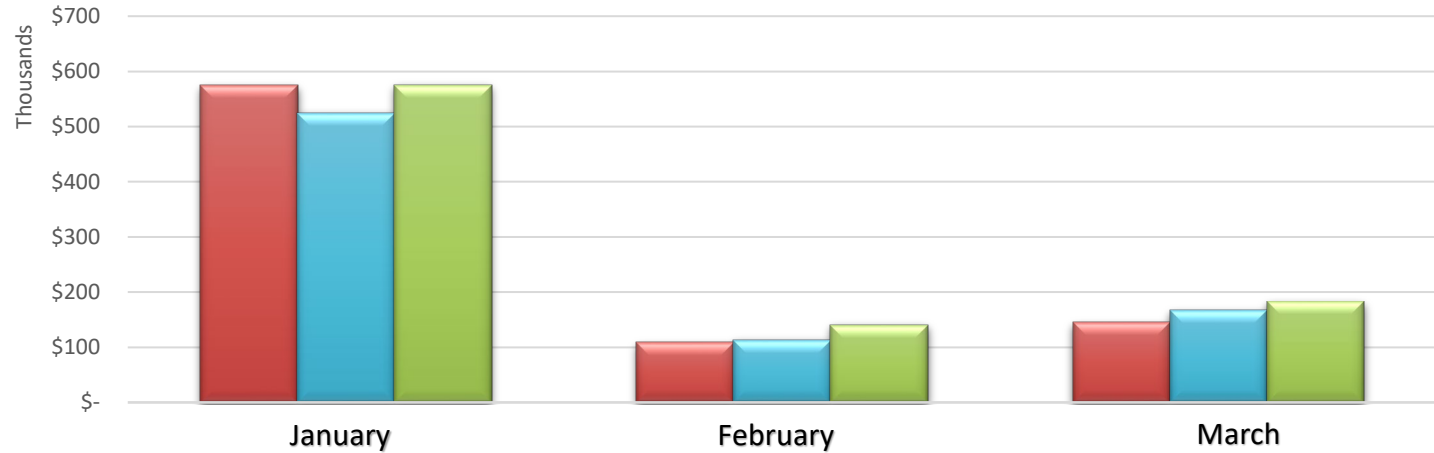
THEATERS

2022 2023 2024



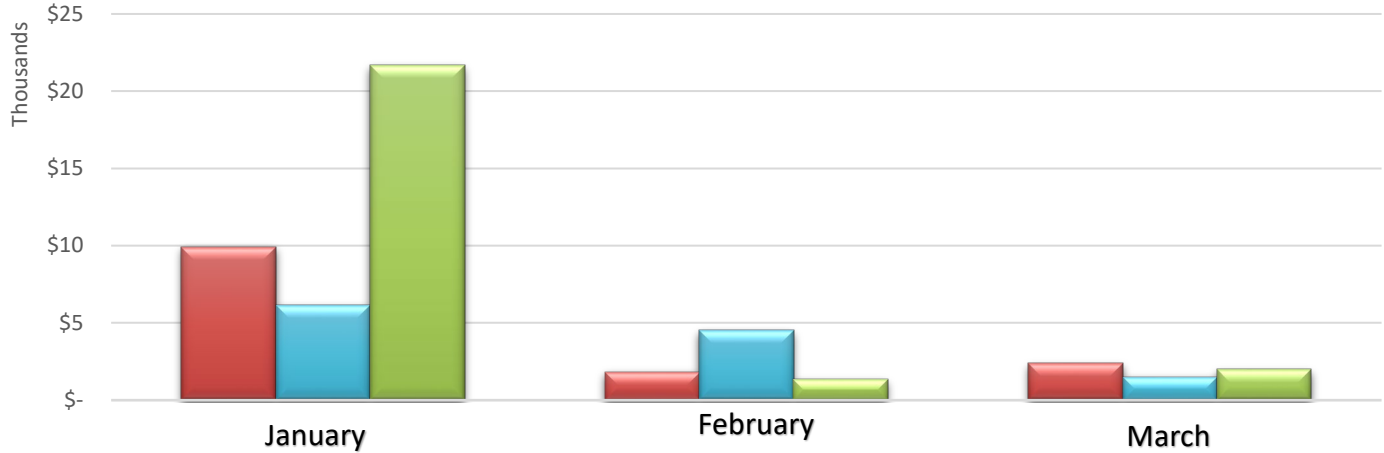
HOTELS & MOTELS

2022 2023 2024



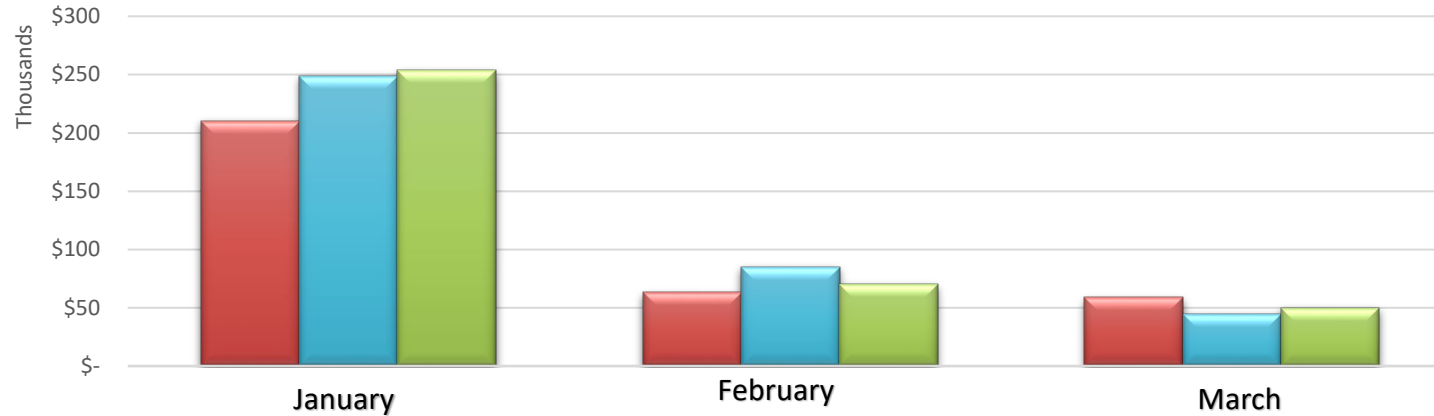
CAMPGROUND

2022 2023 2024



NIGHTLY RENTALS

2022 2023 2024



RESTAURANTS & CONCESSIONS

2022 2023 2024

