

W. 76 Country Blvd
Update (May 2024)



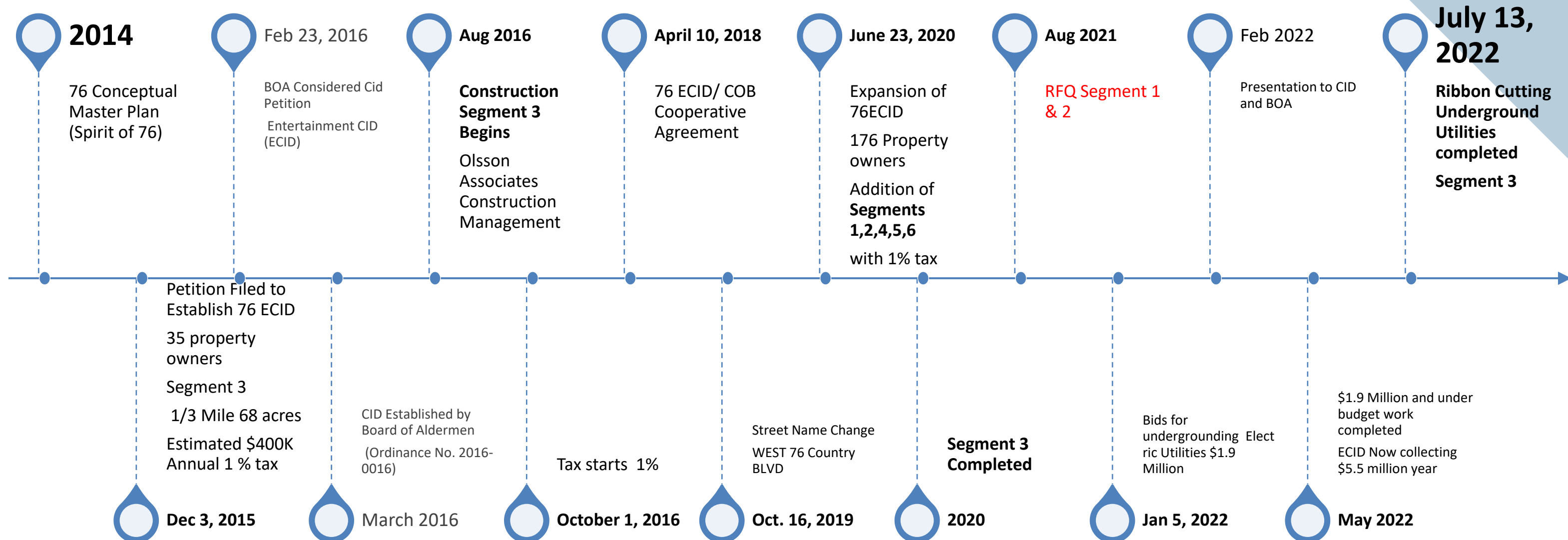


THE VISION

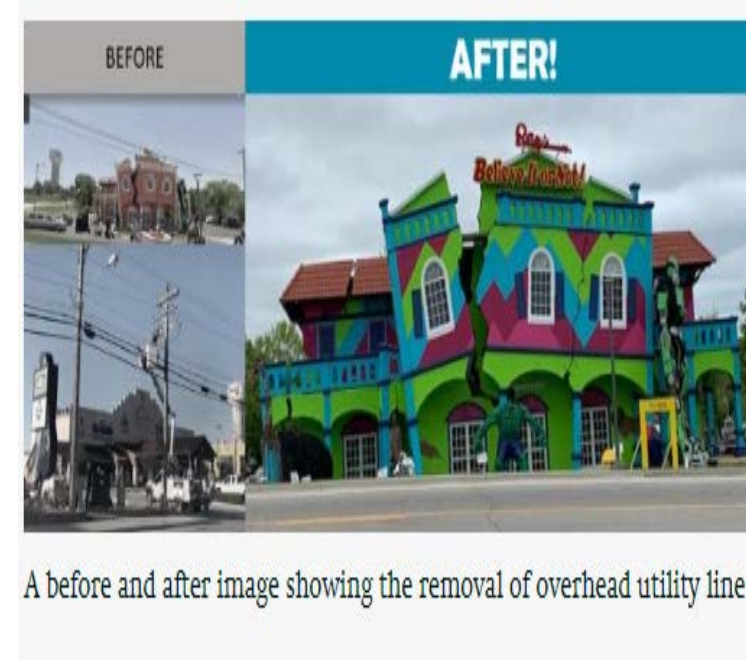
West 76 Country Boulevard improvements to increase safety and business activity. An enhanced streetscape would include better pedestrian/automobile circulation, beautification, and updated design and functionality.

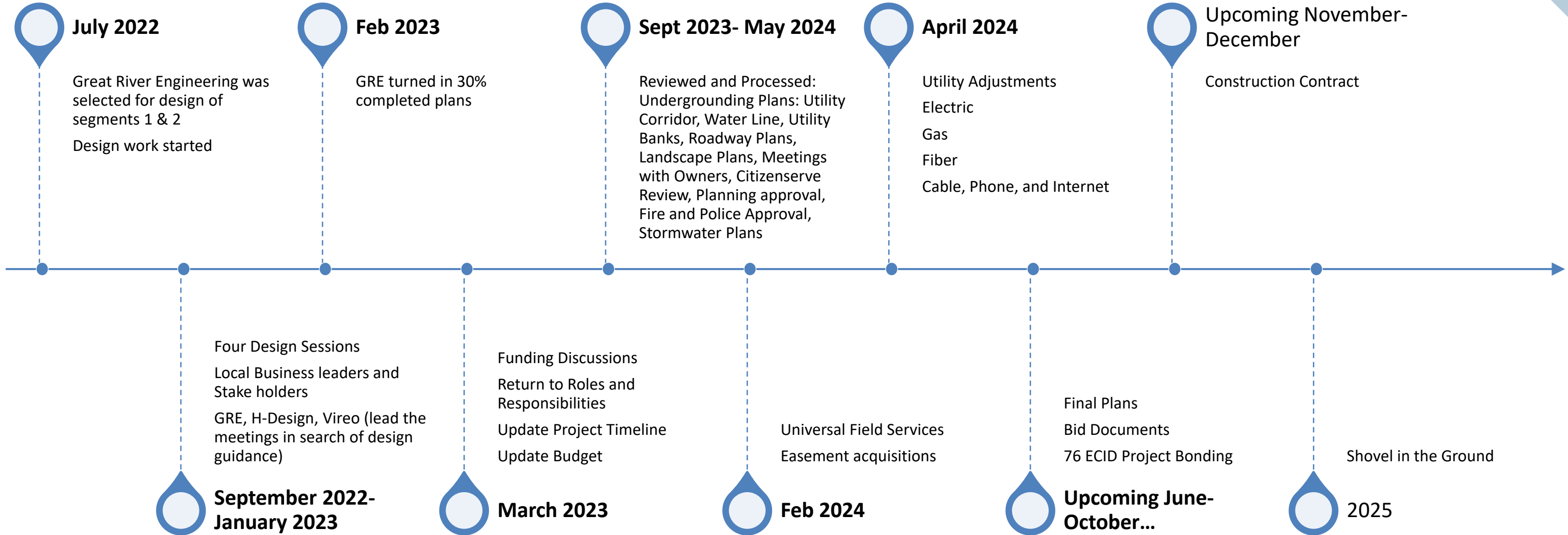
- Relocate Utilities underground
- Enhance Pedestrian Safety-Sidewalks, ADA, Crosswalks
- Grow Business Success
- Update and Improve Visual Appeal
- Improve water line volume, reliability, and control
- Economic Growth





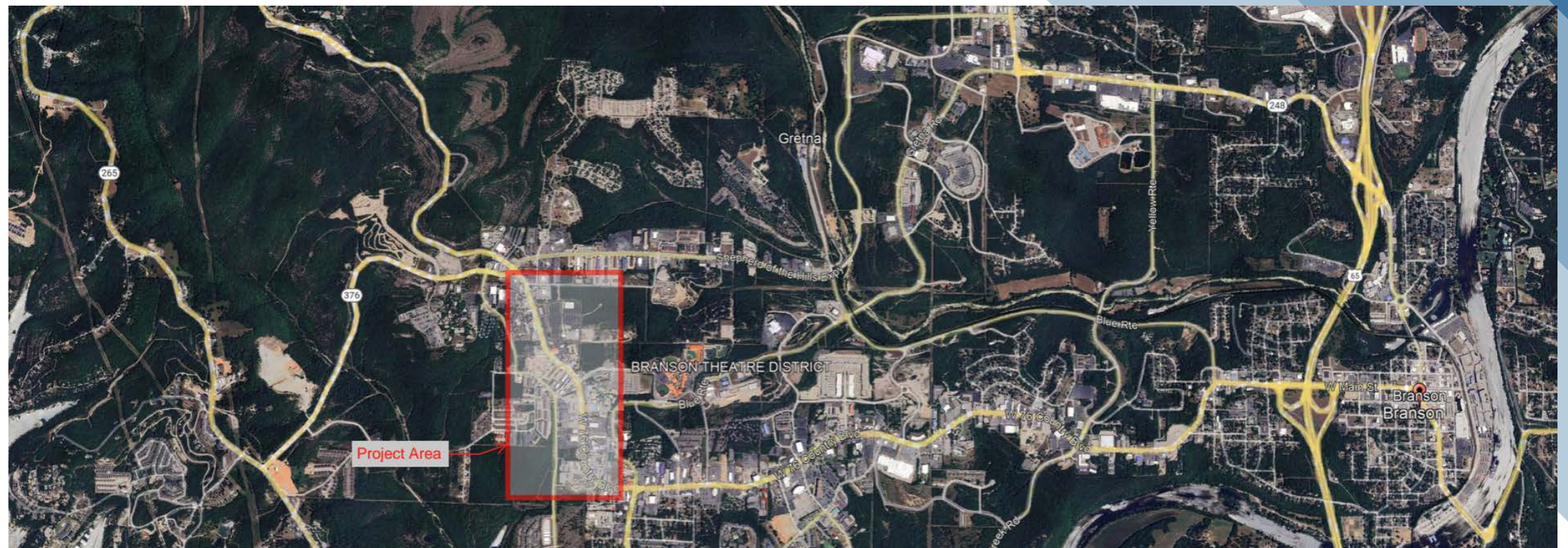
Branson's busiest road now officially named West 76 Country Boulevard



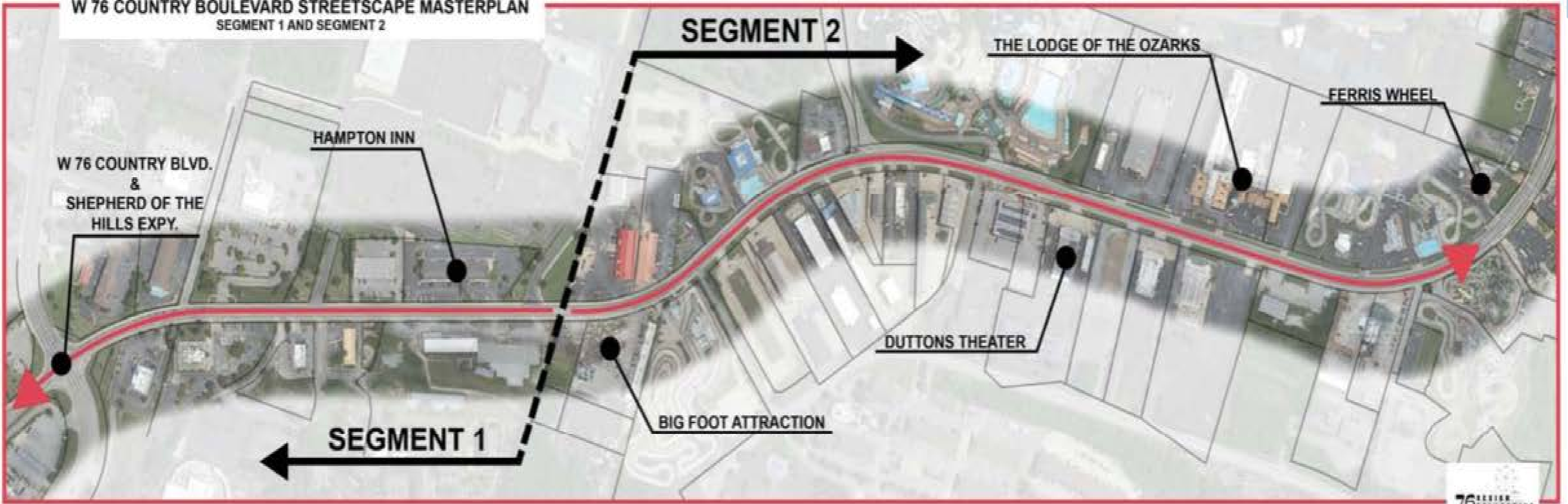




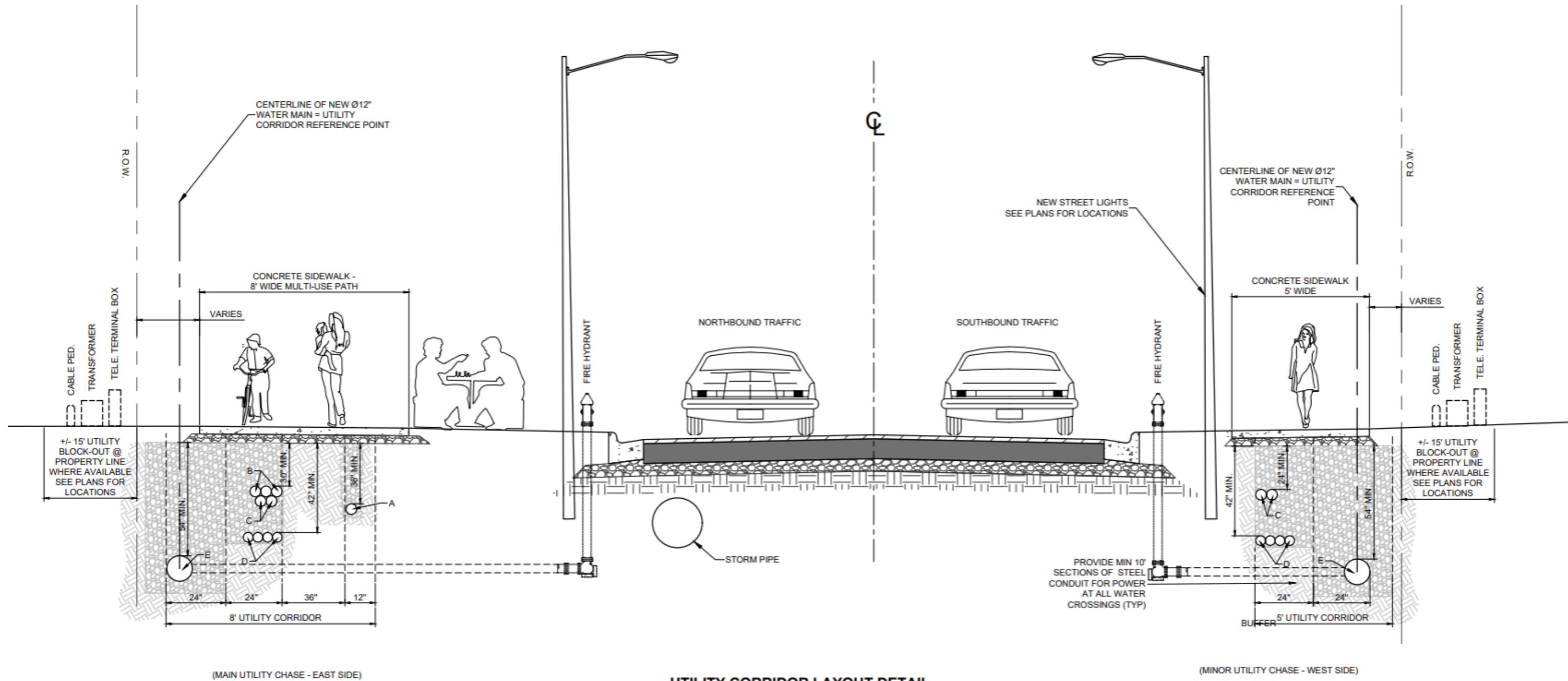
ORIGINAL CONSTRUCTION SCHEDULE			
	COMMENCE		
SEGMENT 1	JANUARY 2022		
SEGMENT 2	JANUARY 2021		
SEGMENT 3	JANUARY 2017		
SEGMENT 4	JANUARY 2023		
SEGMENT 5	JANUARY 2024		
SEGMENT 6	JANUARY 2025		
SEGMENT 7	TBD		
SEGMENT 8	TBD		
DESIGN & CONSTRUCTION SCHEDULE			
	DESIGN	COMMENCE	ACTUAL FINISH
SEGMENT 1	JANUARY 2023	JANUARY 2025	
SEGMENT 2	JANUARY 2023	JANUARY 2025	
SEGMENT 3	2015	JANUARY 2017	July 2022
SEGMENT 4	MARCH 2025	JANUARY 2027	
SEGMENT 5	MARCH 2025	JANUARY 2028	
SEGMENT 6	MARCH 2026	JANUARY 2029	
SEGMENT 7	TBD	TBD	
SEGMENT 8	TBD	TBD	



W 76 COUNTRY BOULEVARD STREETSCAPE MASTERPLAN
SEGMENT 1 AND SEGMENT 2



Water Lines, Duct Bank, Road Layout



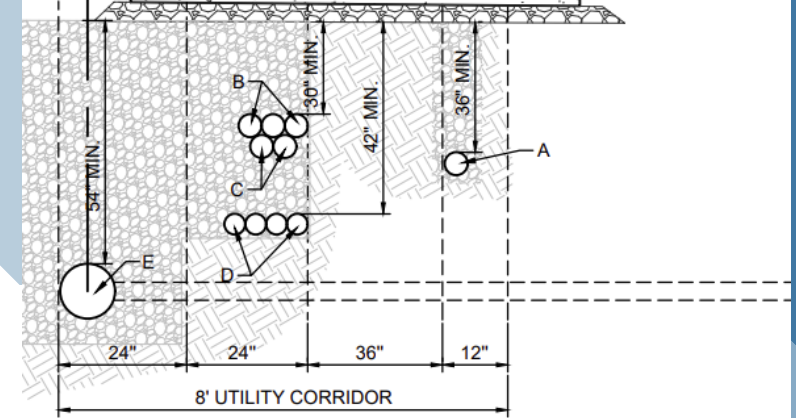
- A. GAS MAIN: Ø2"-Ø4"
B. COMM. CONDUITS: Ø2" PVC, MIN. 6"-12" ABOVE NEXT CONDUIT.
C. ADDITIONAL CONDUIT FOR FUTURE EXPANSION (2) Ø6" PVC
D. ELECTRICAL CONDUIT: 3 PHASE (600A) MAINS Ø4" PVC CONDUIT - WRVE CONFIGURATION SHOWN. LIBERTY PROVIDE (2) Ø6" PVC.
E. WATER MAIN: Ø8"-Ø12"

UTILITY CORRIDOR LAYOUT DETAIL

NOTES:

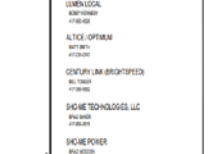
- GROUP ACCESS POINTS, SERVICES, PANELS AND VALVES TO MINIMIZE CONFLICTS WITHIN THE CORRIDOR. LOCATE ALL NEW UTILITY SERVICES, METERS, AND ACCESS POINTS IN 10' - 15' UTILITY BLOCKOUTS AT PROPERTY LINES WHERE FEASIBLE.
- CONDUITS FOR ALL DRY UTILITIES (POWER AND COMMUNICATIONS) SHALL BE INSTALLED IN A COMMON TRENCH WITH A STEP DOWN FOR THE NEW WATER MAIN. UTILIZING FULL DEPTH PEA GRAVEL BEDDING.
- THE GAS MAIN WILL BE INSTALLED IN A SEPARATE TRENCH OR VIA DIRECT BORE.
- WATER MAIN, POWER, AND COMMUNICATION CONDUITS WILL BE INSTALLED CONCURRENTLY BY A SINGLE CONTRACTOR WITH ALL FITTINGS SERVICE TEES/CONNECTIONS.
- UTILITY CORRIDOR LAYOUT WILL BE BASED ON THE NEW WATERMAIN CENTERLINE ALIGNMENT. CORRIDOR WILL NOT DIRECTLY CORRELATE TO PEDESTRIAN PAVEMENT.
- CURRENT ROADWAY AND PEDESTRIAN PAVEMENT PLAN INDICATED ALONG THE CORRIDOR IS PRELIMINARY AND MAY BE ADJUSTED.

- C. ADDITIONAL CONDUIT FOR FUTURE EXPANSION (2) Ø6" PVC.
D. ELECTRICAL CONDUIT: 3 PHASE (600A) MAINS Ø4" PVC CONDUIT - WRVE CONFIGURATION SHOWN. LIBERTY PROVIDE (2) Ø6" PVC.
E. WATER MAIN: Ø8"-Ø12"



(MAIN UTILITY CHASE - EAST SIDE)

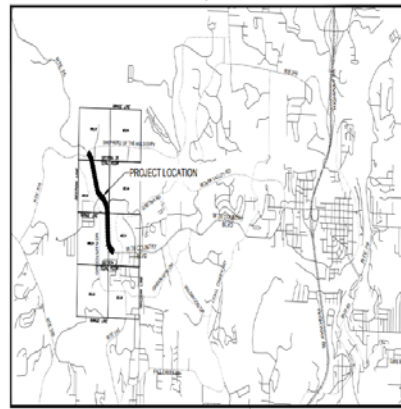
- A. GAS MAIN: Ø2"-Ø4"
B. COMM. CONDUITS: Ø2" PVC, MIN. 6"-12" ABOVE NEXT CONDUIT.
C. ADDITIONAL CONDUIT FOR FUTURE EXPANSION (2) Ø6" PVC
D. ELECTRICAL CONDUIT: 3 PHASE (600A) MAINS Ø4" PVC CONDUIT - WRVE CONFIGURATION SHOWN. LIBERTY PROVIDE (2) Ø6" PVC.
E. WATER MAIN: Ø8"-Ø12"



PRELIMINARY PLANS FOR: W. 76 COUNTRY BLVD STREETSCAPE WATER MAIN IMPROVEMENTS SEGMENTS 1 & 2 CITY OF BRANSON, MISSOURI JANUARY 26, 2024

SECTION 35, T23N - R22W
SECTION 2, T22N - R22W

PROJECT LOCATION



ITEM	UNIT	QUANTITY
1. WATER MAIN	LF	200
2. COMM. CONDUITS	LF	800
3. ELECTRICAL CONDUITS	LF	800
4. GAS MAIN	LF	100
5. PEDESTRIAN PAVEMENT	SF	1000
6. ASPHALT PAVEMENT	SF	1000
7. CONCRETE SIDEWALK	SF	1000
8. STORM PIPE	LF	100
9. FIRE HYDRANT	EA	2
10. STREET LIGHTS	EA	2

NO.	DESCRIPTION
1	GENERAL NOTES
2	UTILITY CORRIDOR LAYOUT
3	STORM PIPE LAYOUT
4	STREET LIGHTS LAYOUT
5	PEDESTRIAN PAVEMENT LAYOUT
6	ASPHALT PAVEMENT LAYOUT
7	CONCRETE SIDEWALK LAYOUT
8	STORM PIPE LAYOUT
9	FIRE HYDRANT LAYOUT
10	STREET LIGHTS LAYOUT

NO.	DESCRIPTION
1	GENERAL NOTES
2	UTILITY CORRIDOR LAYOUT
3	STORM PIPE LAYOUT
4	STREET LIGHTS LAYOUT
5	PEDESTRIAN PAVEMENT LAYOUT
6	ASPHALT PAVEMENT LAYOUT
7	CONCRETE SIDEWALK LAYOUT
8	STORM PIPE LAYOUT
9	FIRE HYDRANT LAYOUT
10	STREET LIGHTS LAYOUT

NO.	DESCRIPTION
1	GENERAL NOTES
2	UTILITY CORRIDOR LAYOUT
3	STORM PIPE LAYOUT
4	STREET LIGHTS LAYOUT
5	PEDESTRIAN PAVEMENT LAYOUT
6	ASPHALT PAVEMENT LAYOUT
7	CONCRETE SIDEWALK LAYOUT
8	STORM PIPE LAYOUT
9	FIRE HYDRANT LAYOUT
10	STREET LIGHTS LAYOUT

NO.	DESCRIPTION
1	GENERAL NOTES
2	UTILITY CORRIDOR LAYOUT
3	STORM PIPE LAYOUT
4	STREET LIGHTS LAYOUT
5	PEDESTRIAN PAVEMENT LAYOUT
6	ASPHALT PAVEMENT LAYOUT
7	CONCRETE SIDEWALK LAYOUT
8	STORM PIPE LAYOUT
9	FIRE HYDRANT LAYOUT
10	STREET LIGHTS LAYOUT

NO.	DESCRIPTION
1	GENERAL NOTES
2	UTILITY CORRIDOR LAYOUT
3	STORM PIPE LAYOUT
4	STREET LIGHTS LAYOUT
5	PEDESTRIAN PAVEMENT LAYOUT
6	ASPHALT PAVEMENT LAYOUT
7	CONCRETE SIDEWALK LAYOUT
8	STORM PIPE LAYOUT
9	FIRE HYDRANT LAYOUT
10	STREET LIGHTS LAYOUT

NO.	DESCRIPTION
1	GENERAL NOTES
2	UTILITY CORRIDOR LAYOUT
3	STORM PIPE LAYOUT
4	STREET LIGHTS LAYOUT
5	PEDESTRIAN PAVEMENT LAYOUT
6	ASPHALT PAVEMENT LAYOUT
7	CONCRETE SIDEWALK LAYOUT
8	STORM PIPE LAYOUT
9	FIRE HYDRANT LAYOUT
10	STREET LIGHTS LAYOUT

NO.	DESCRIPTION
1	GENERAL NOTES
2	UTILITY CORRIDOR LAYOUT
3	STORM PIPE LAYOUT
4	STREET LIGHTS LAYOUT
5	PEDESTRIAN PAVEMENT LAYOUT
6	ASPHALT PAVEMENT LAYOUT
7	CONCRETE SIDEWALK LAYOUT
8	STORM PIPE LAYOUT
9	FIRE HYDRANT LAYOUT
10	STREET LIGHTS LAYOUT

NO.	DESCRIPTION
1	GENERAL NOTES
2	UTILITY CORRIDOR LAYOUT
3	STORM PIPE LAYOUT
4	STREET LIGHTS LAYOUT
5	PEDESTRIAN PAVEMENT LAYOUT
6	ASPHALT PAVEMENT LAYOUT
7	CONCRETE SIDEWALK LAYOUT
8	STORM PIPE LAYOUT
9	FIRE HYDRANT LAYOUT
10	STREET LIGHTS LAYOUT



ACTIVATION ZONE

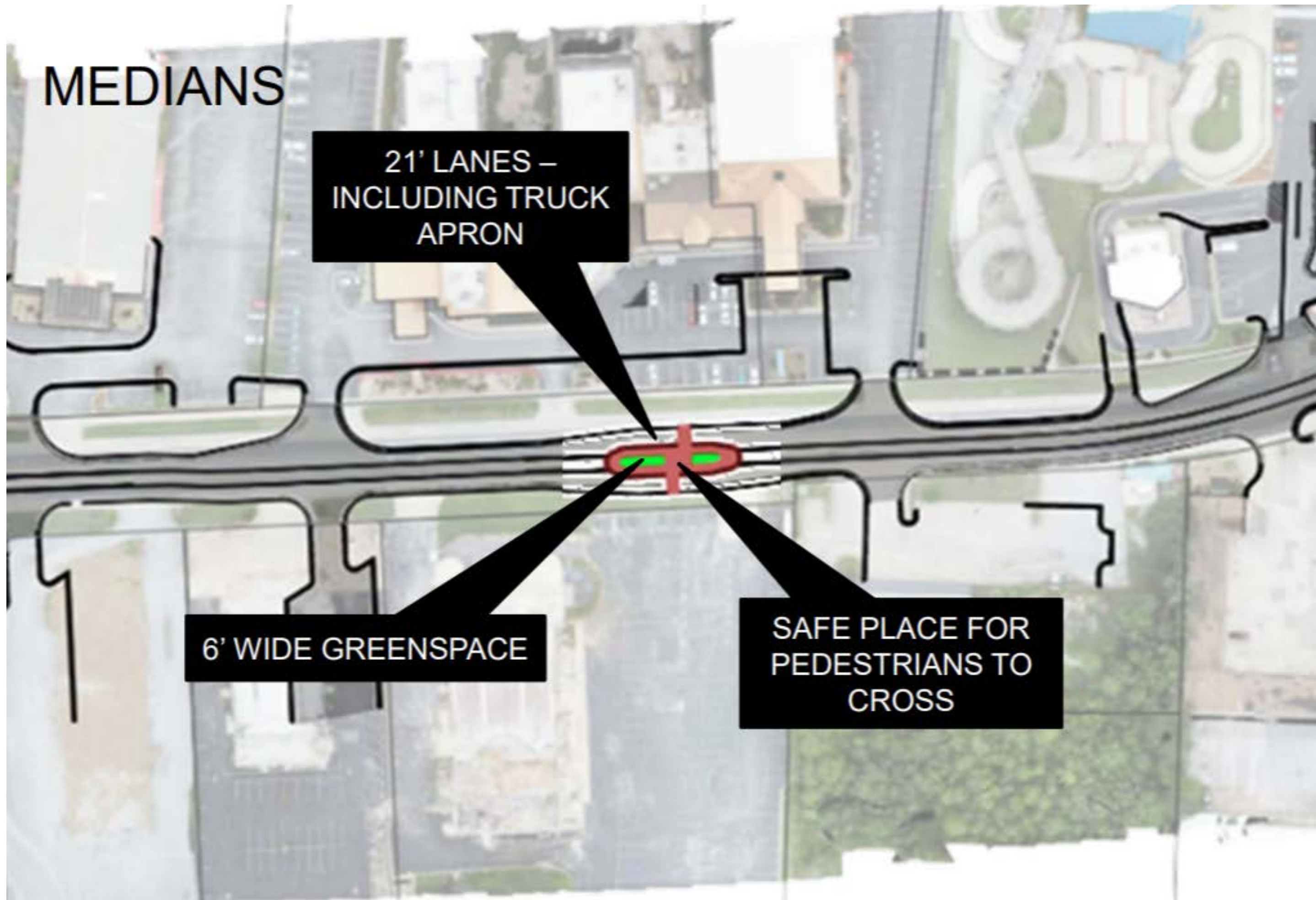


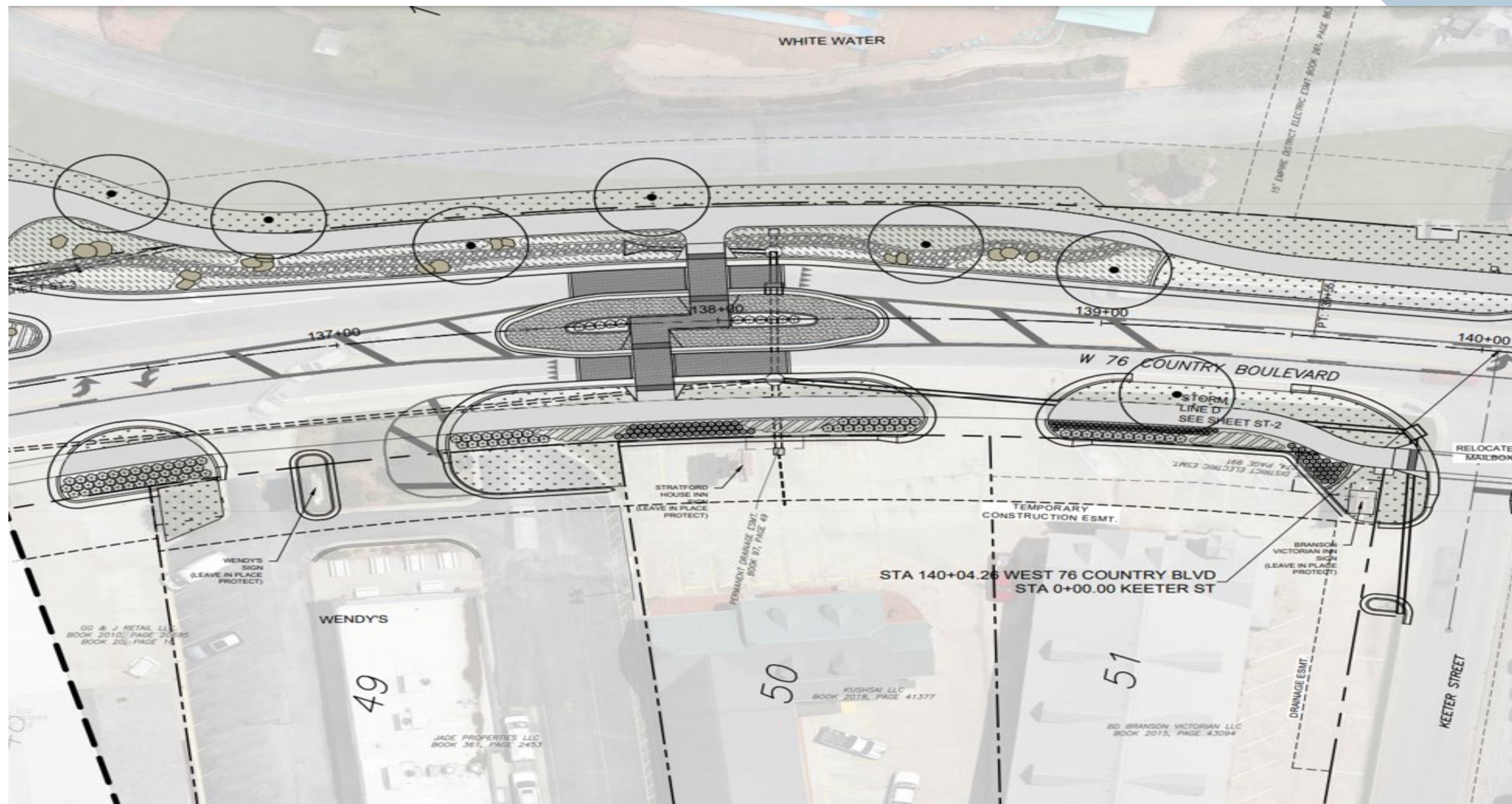
MEDIANS

21' LANES –
INCLUDING TRUCK
APRON

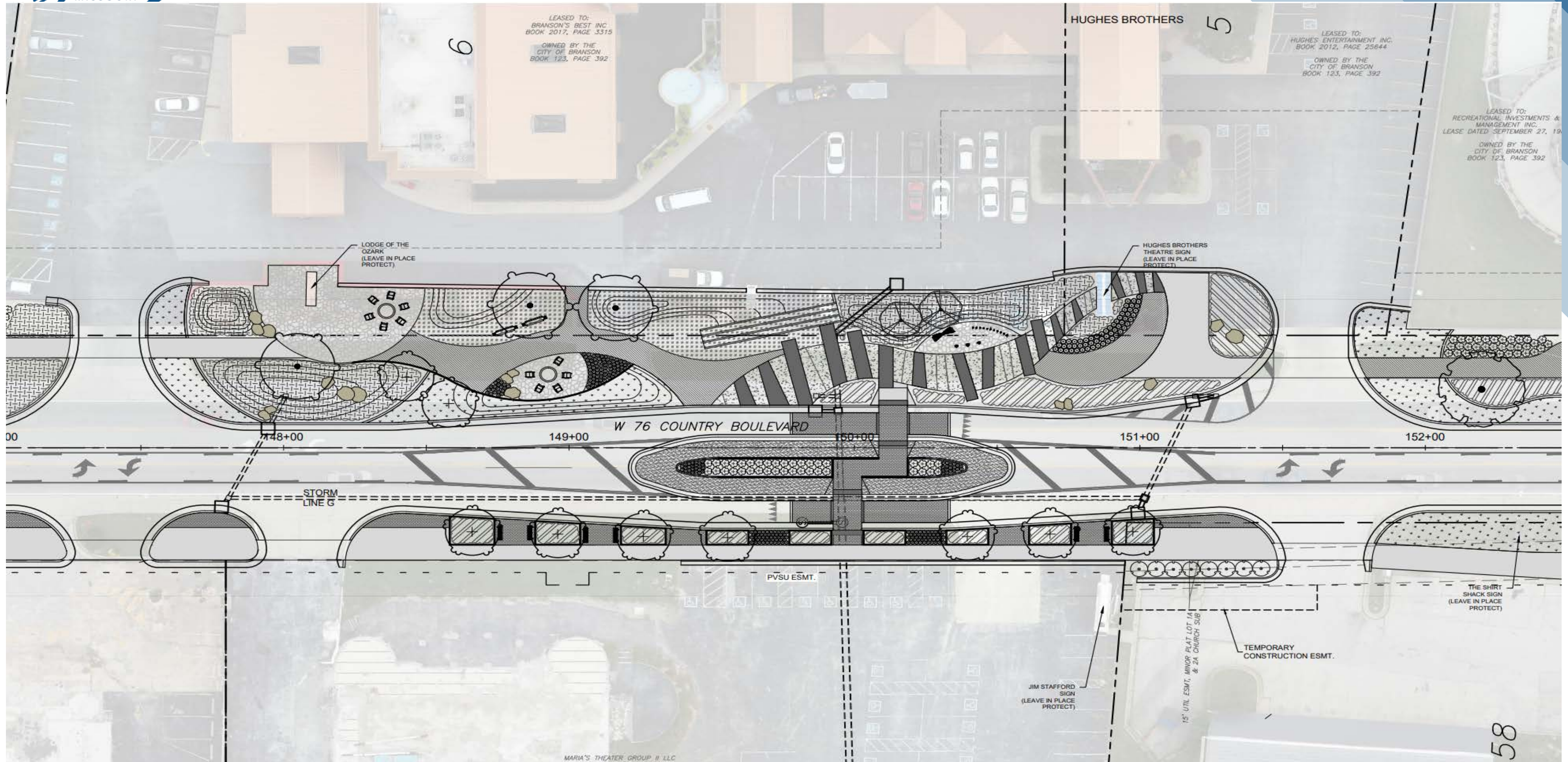
6' WIDE GREENSPACE

SAFE PLACE FOR
PEDESTRIANS TO
CROSS











EAST END ACTIVATION



RELAXATION ZONE



WAVY WALK

76 & 165/ Gretna Intersection Improvements

