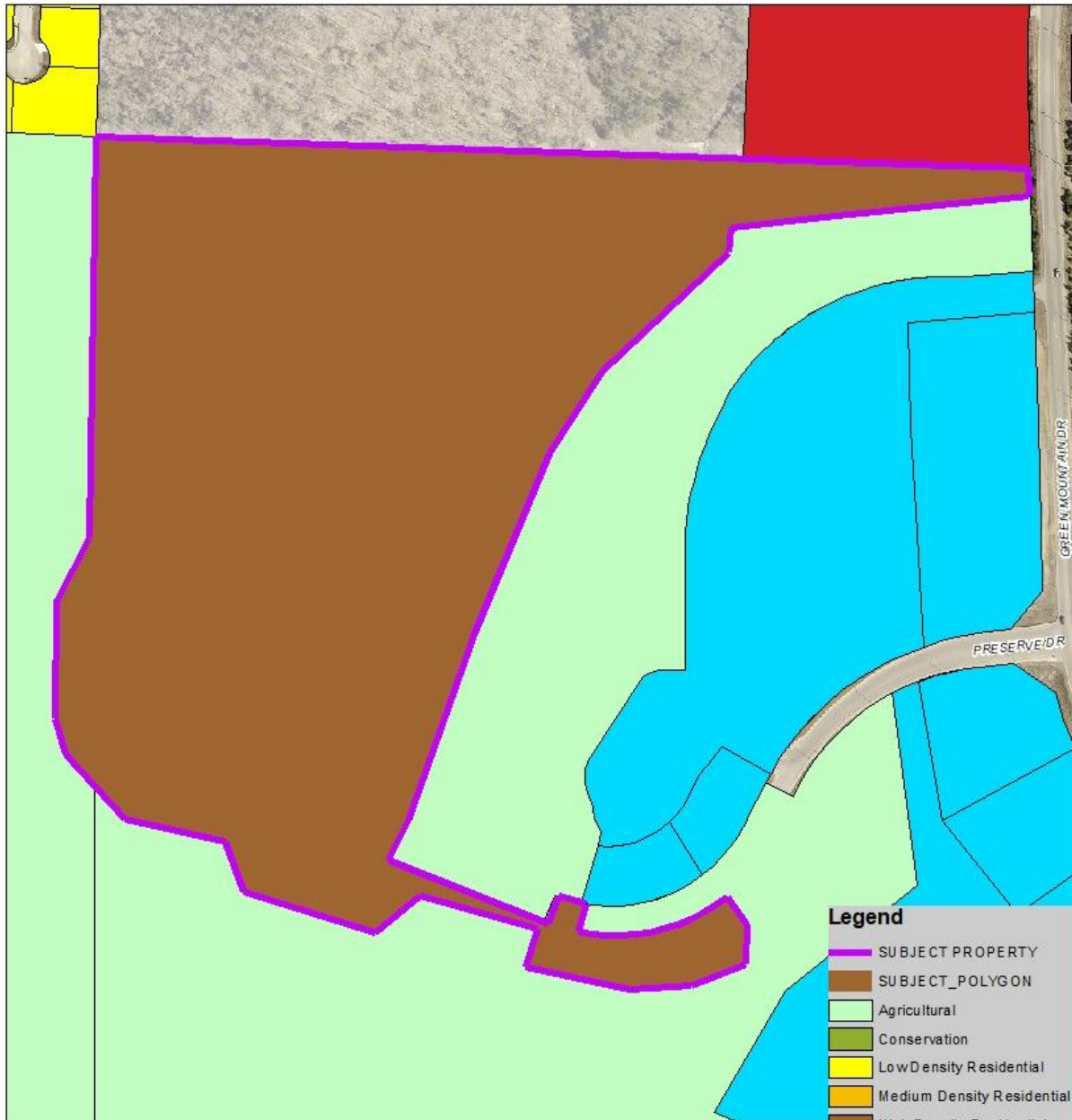


- Legend**
- SUBJECT PROPERTY
 - Agricultural
 - Conservation
 - Low Density Residential
 - Medium Density Residential
 - High Density Residential
 - Neighborhood Commercial
 - Mixed-Use
 - Community Commercial
 - Downtown
 - Entertainment
 - Business
 - Industrial
 - Planned Development
 - Unzoned

N
1 inch = 268 feet
City of Branson
Planning & Development
Date: 2/24/2025

598 ANIMAL SAFARI RD (Current Zoning)



Legend

- SUBJECT PROPERTY
- SUBJECT_POLYGON
- Agricultural
- Conservation
- Low Density Residential
- Medium Density Residential
- High Density Residential
- Neighborhood Commercial
- Mixed-Use
- Community Commercial
- Downtown
- Entertainment
- Business
- Industrial
- Planned Development
- Unzoned

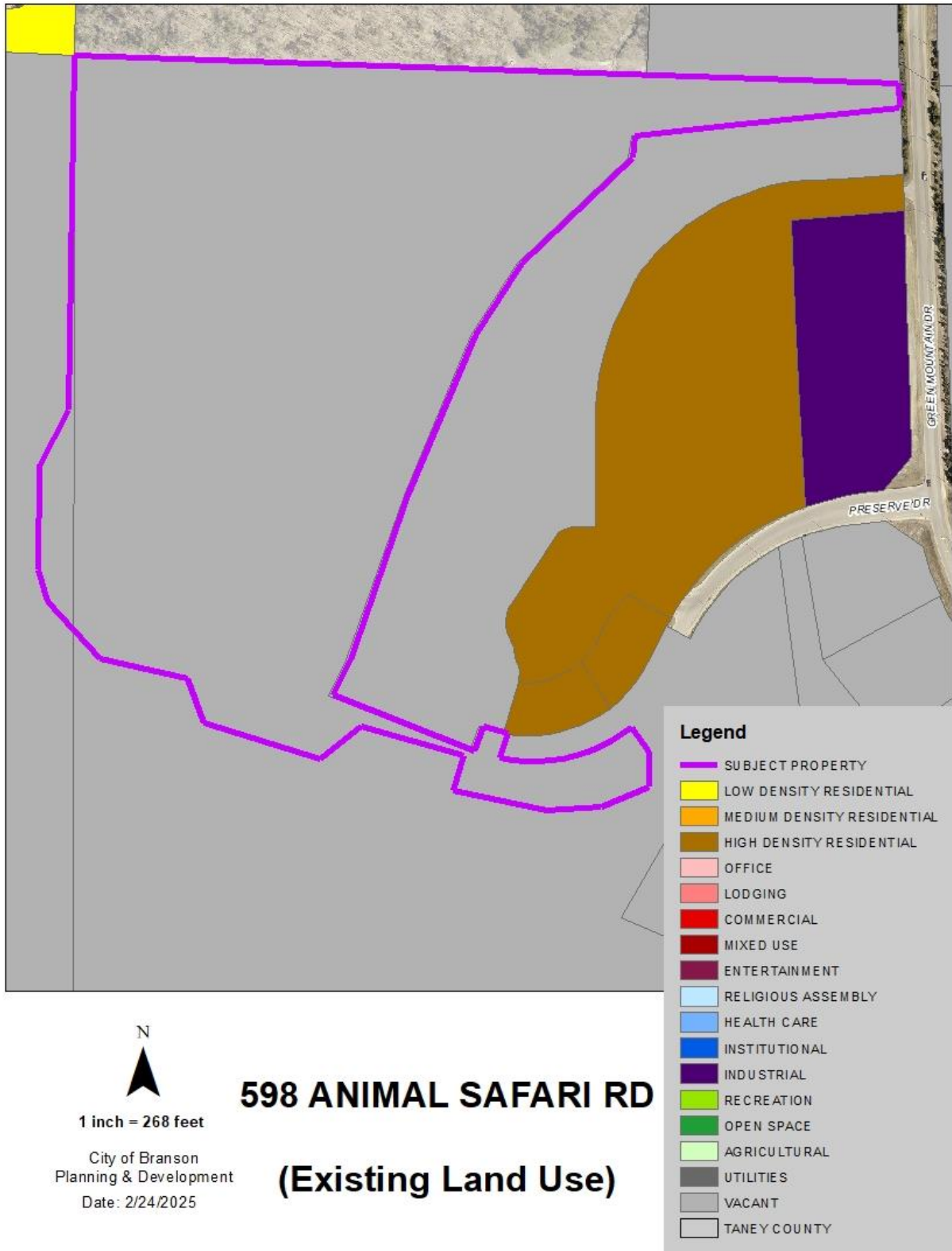


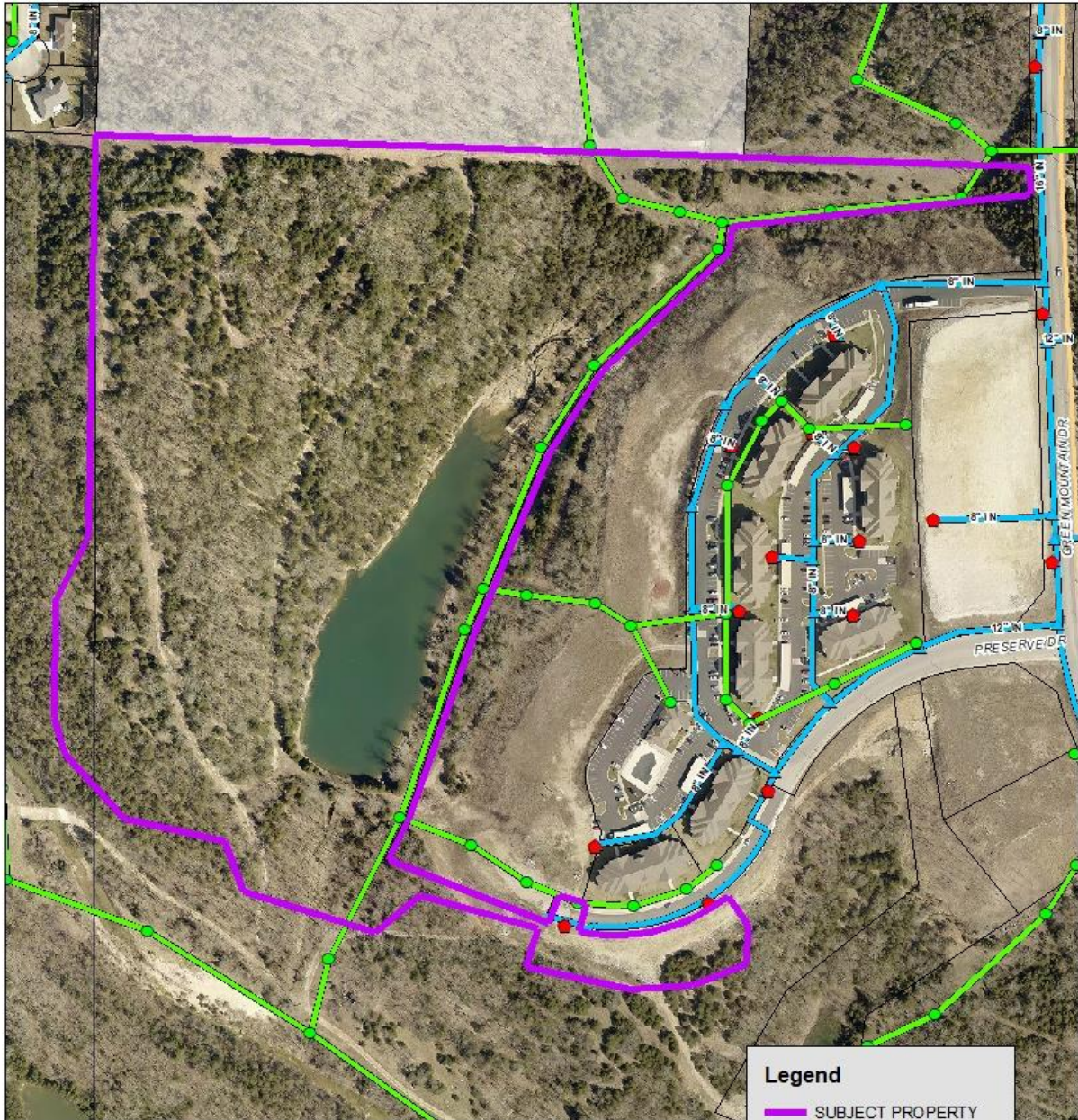
1 inch = 268 feet

City of Branson
Planning & Development

Date: 2/24/2025

598 ANIMAL SAFARI RD (Proposed Zoning)





N
 1 inch = 268 feet
 City of Branson
 Planning & Development
 Date: 2/24/2025

598 ANIMAL SAFARI RD (Aerial with Utilities)

Legend

- SUBJECT PROPERTY
- Sanitary Sewer Manholes
- Liftstation
- Sewer Gravity Mains
- Sewer Pressurized Mains
- ◆ Water Hydrants
- ▲ Water System Valves
- Water Mains
- DISTRIBUTION
- TRANSMISSION

View from the North



View from the West



View from the South



View from the East

